



reform<sup>®</sup>  
sports

*2.000 Seats Stadium*



HEADQUARTER - İSTANBUL/TÜRKİYE

REFORM SPORTS



[reformsports.com](https://www.reformsports.com)



[info@reformsports.com](mailto:info@reformsports.com)



+90 212 533 70 73





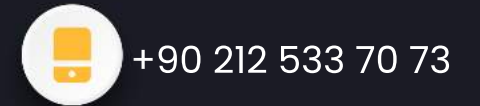
# FACTORY

## TEKİRDAĞ/TÜRKİYE

TURF PRODUCTION CAPACITY 11.000.000 M<sup>2</sup> / YEAR •

RUBBER PRODUCTION CAPACITY 300.000 M<sup>2</sup> / YEAR •

STEEL CONSTRUCTION CAPACITY 12.000 TON / YEAR •



# ○ WE ARE LEADING ○

- **STADIUMS**
- **SPORTS ARENA**
- **TURN-KEY SPORTS COMPLEXES**
- **FIFA FOOTBALL FIELDS**
- **PROFESSIONAL FOOTBALL FIELDS**
- **HYBRID TURF FOOTBALL FIELDS**
- **ATHLETICS TRACKS**
- **METAL CONSTRUCTION**
- **INDOOR SPORTS COMPLEXES**
- **OUTDOOR SPORTS COMPLEXES**
- **PADEL COURTS**
- **FOOT 5 COURTS**
- **BASKETBALL, VOLLEYBALL, HANDBALL, TENNIS COURT**
- **HOCKEY, CRICKET FIELDS**
- **GOLF COURSES**
- **MULTISPORT FLOORING**
- **LANDSCAPING**
- **CHILDREN PLAY GROUNDS**



# WHY REFORM SPORTS?

- OVER 30 YEARS OF EXPERIENCE
- TURN-KEY SOLUTIONS
- FLEXIBILITY AND FAST DELIVERY
- ENVIRONMENTALLY FRIENDLY
- RECYCLABLE MATERIALS
- HIGH QUALITY AND COMPETITIVE PRICES
- WARRANTY AND DURABILITY
- INTERNATIONALLY CERTIFIED



[reformsports.com](https://www.reformsports.com)



[info@reformsports.com](mailto:info@reformsports.com)



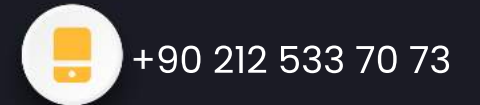
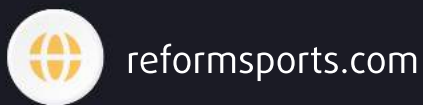
+90 212 533 70 73



BRB  
HOLDING



reformsports®





# HIGHEST QUALITY

CERTIFIED BY INTERNATIONAL AUTHORITIES





**7**  
**REGIONS**

**105**  
**COUNTRIES**

**15.000**  
**PROJECTS**



## AFRICA

NIGERIA	NIJER	ETHIOPIA	SOUTH SUDAN
GANA	SIERRA LEONE	KENYA	MAURITIUS
SENEGAL	DEM. REP. OF CONGO	UGANDA	
IVORY COAST	CAMEROON	TANZANIA	
GAMBIA	KONGO	RWANDA	
MALI	GABON	MOZAMBIQUE	
GUINEA	CHAD	BURUNDI	
MAURITANIA	SOUTH AFRICA	DJIBOUTI	
BURKINA FASO	ZAMBIA	SOMALIA	
TOGO	SUDAN		

## NORTH AFRICA

EGYPT  
MOROCCO  
TUNISIA  
ALGERIA  
LIBYA

## ASSIA

RUSSIA	INDIA
AZERBAIJAN	MALAYSIA
TURKMENISTAN	PAKISTAN
UZBEKISTAN	BANGLADESH
AFGHANISTAN	PHILIPPINES
KAZAKHSTAN	HONG KONG
KYRGYZSTAN	ARMENIA
TAIIKISTAN	GEORGIA

## AMERICA

USA	HAITI
CANADA	MARTINIQUE
PANAMA	GUYANA
CHILE	FRENCH GUIANA

## EUROPE

GERMANY	UKRAINE	MALTA
FRANCE	POLAND	BELARUS
UK	PORTUGAL	
IRELAND	DENMARK	
ITALY	NORWAY	
SPAIN	MOLDOVA	
AUSTRIA	CZECH REPUBLIC	
NETHERLANDS	SLOVAKIA	
BELGIUM	LATVIA	

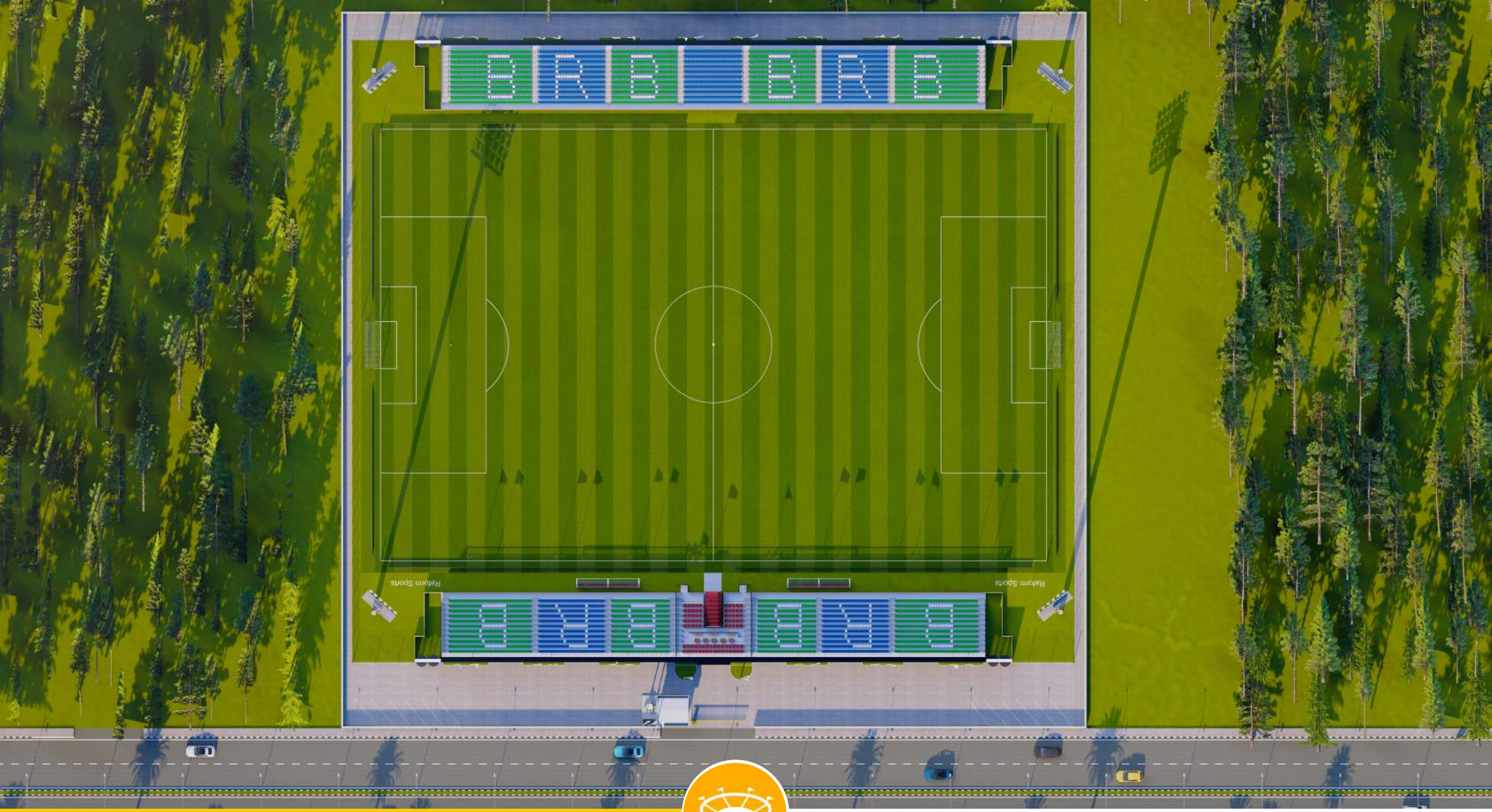
## BALKANS

TÜRKİYE	CROATIA
BOSNIA	ALBANIA
BULGARIA	GREECE
ROMANIA	SERBIA
KOSOVO	SLOVENIA
MACEDONIA	MONTENEGRO

## MIDDLE EAST

SAUDI ARABIA	BAHRAIN
KUWAIT	YEMEN
QATAR	LEBANON
UAE	JORDAN
OMAN	CYPRUS
IRAQ	KKTC





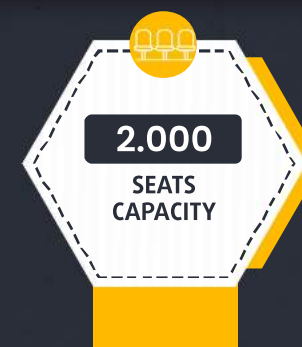
# SCENARIO 3





# ▶ STADIUM

- FIFA Football Field and running track
- The staff stands on the ground floor and a large traffic.
- Tribunes, technical rooms and offices.



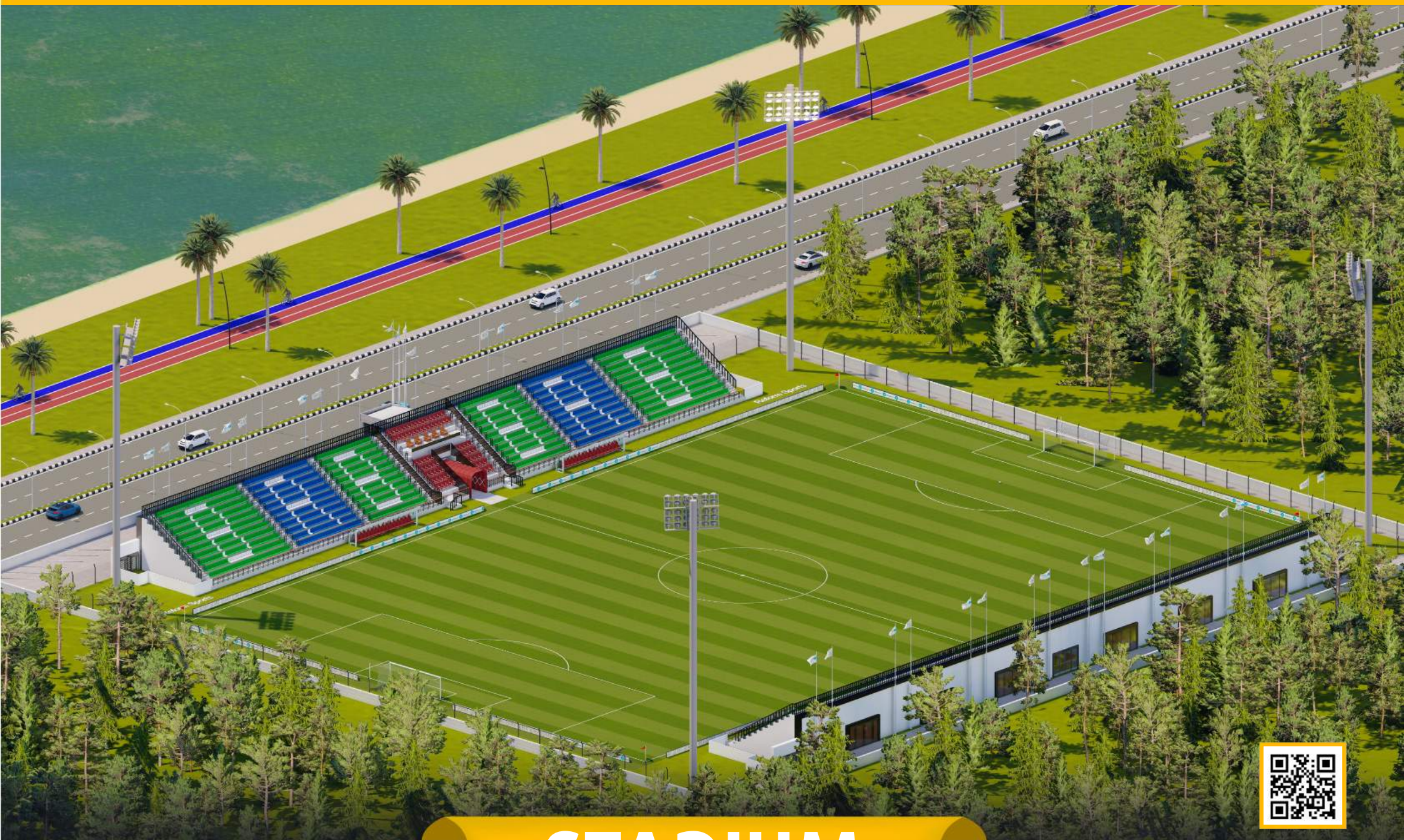


# STADIUM

- 1 STANDARD FOOTBALL FIELD
- 2 TRIBUNES
- 3 COMMON SPACE







# STADIUM



[reformsports.com](https://reformsports.com)



[info@reformsports.com](mailto:info@reformsports.com)



+90 212 533 70 73



# STADIUM

## TECHNICAL SPECIFICATIONS

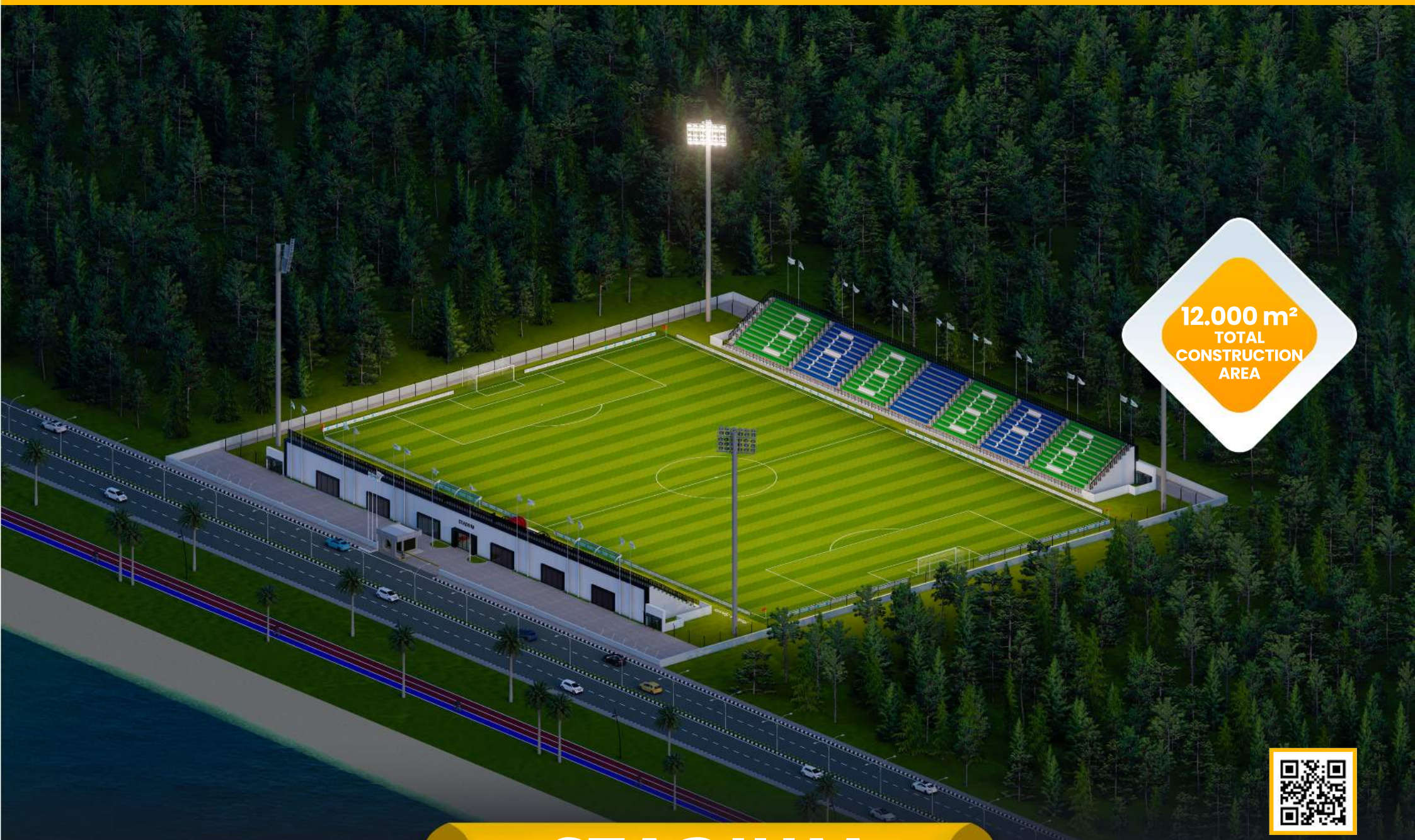
- 12.000m2 Total construction area
- 600m2 indoor area
- 7.140m2 FIFA standards football field
- 2000 seating capacity tribunes
- 100 VIP Tribunes,
- 7 Protocol Tribunes
- Goal post and nets
- Corner poles
- Substitute benches
- Referee bench
- Ligthing system
- Led Score Board
- Fire system (Optional)
- Emergency alert system
- Car parking area for 40 cars
- Sound system (Optional)

## LIVING AREAS

- Cafeterias
- Fitnes center
- Locker rooms
- Referee locker rooms
- Public restrooms
- Disbaled restrooms
- Observers and representatives rooms
- Meeting rooms
- Facility supervisor room
- Staff rooms
- Security rooms
- Offices
- UPS room
- Electricity controlling room
- Camera System (Optional)
- Card access control system (Optional)
- Generator (Optional)







12.000 m<sup>2</sup>  
TOTAL  
CONSTRUCTION  
AREA



# STADIUM



[reformsports.com](https://reformsports.com)



[info@reformsports.com](mailto:info@reformsports.com)



+90 212 533 70 73





600 m<sup>2</sup>  
INDOOR  
AREA

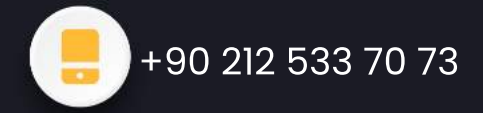
STADIUM



STADIUM



# STADIUM



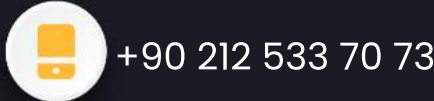




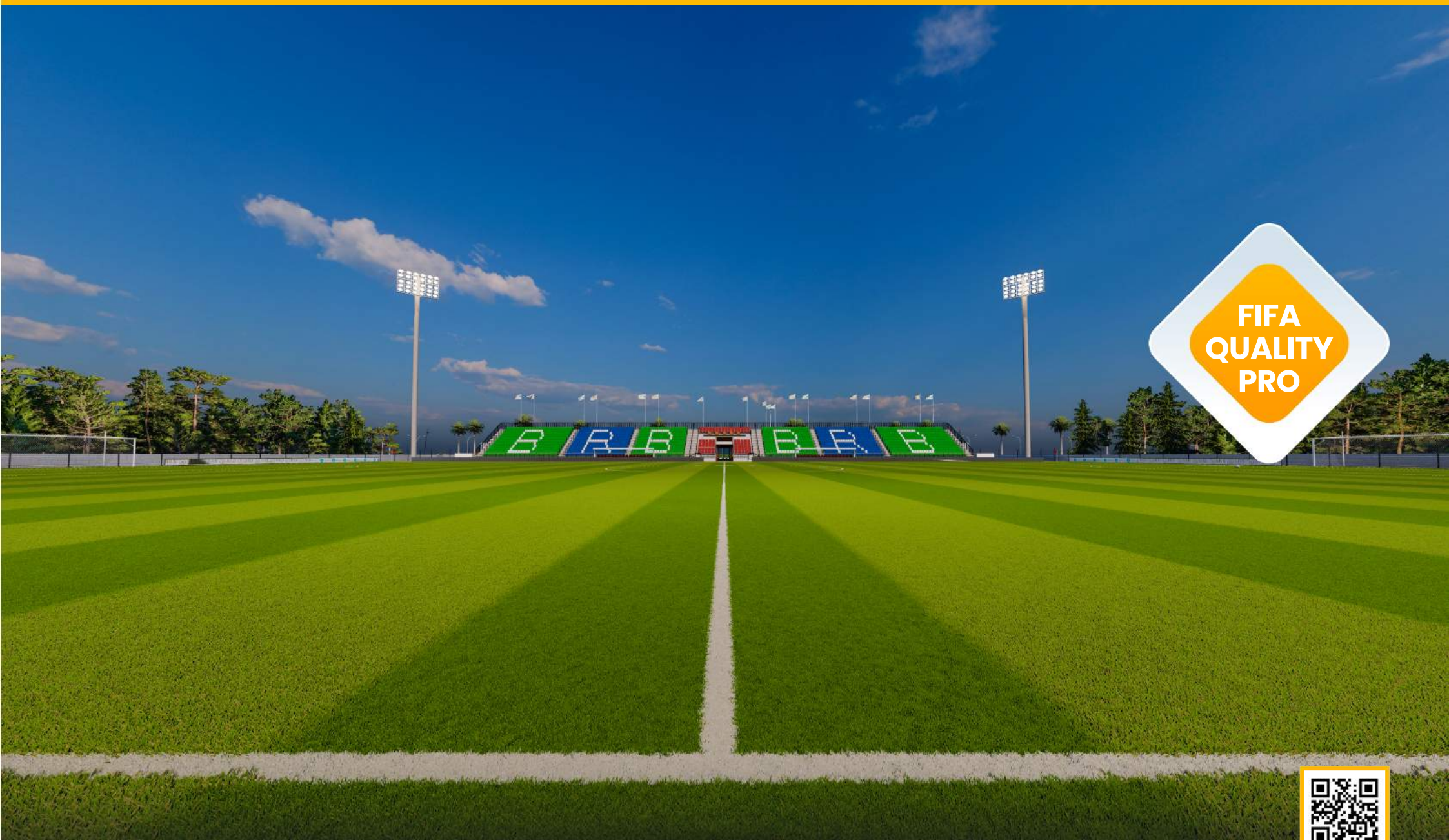
**ERGONOMIC  
DESIGN**



# STADIUM







**STANDARD  
FOOTBALL FIELD**



[reformsports.com](https://reformsports.com)



[info@reformsports.com](mailto:info@reformsports.com)



+90 212 533 70 73



## High Quality

Our products are produced with the highest quality, ethical standards and in accordance with the international standards



## Resistant

Our abrasion and wear resistant products come with different heights, colour options and unique characteristics



## Long Lasting

Artificial turfs are easy to maintain and cheap, as well as have a very long life with low maintenance



REFORM SPORTS' synthetic turf is produced with new generation monofilament yarns provides high-quality and provides maximum-performance for training and professional football pitches. Delays wear and tear due to modern yarn design and features. For many years; ball roll and bouncing and shock absorbing values remain in accordance with international standards. It doesn't reduce player's performance, it is environmentally friendly and recyclable

# ARTIFICIAL GRASS



## Natural Appearance

It is produced with monofilament yarns for aesthetic and more natural appearance



## High UV Resistance

It is produced with special UV resistant additive. Besides being resistant to UV rays, it is also resistant to cold weather



## Nature Friendly

Our products are manufactured with environmental awareness and consist of recyclable materials with the use of effective technology and component





7.140 m<sup>2</sup>



# STANDARD FOOTBALL FIELD



[reformsports.com](https://reformsports.com)



[info@reformsports.com](mailto:info@reformsports.com)



+90 212 533 70 73



**FIFA  
STANDARD  
ARTIFICIAL  
GRASS**

**INTERNATIONAL  
MATCH  
STANDARD**



## STANDARD FOOTBALL FIELD



[reformsports.com](https://reformsports.com)

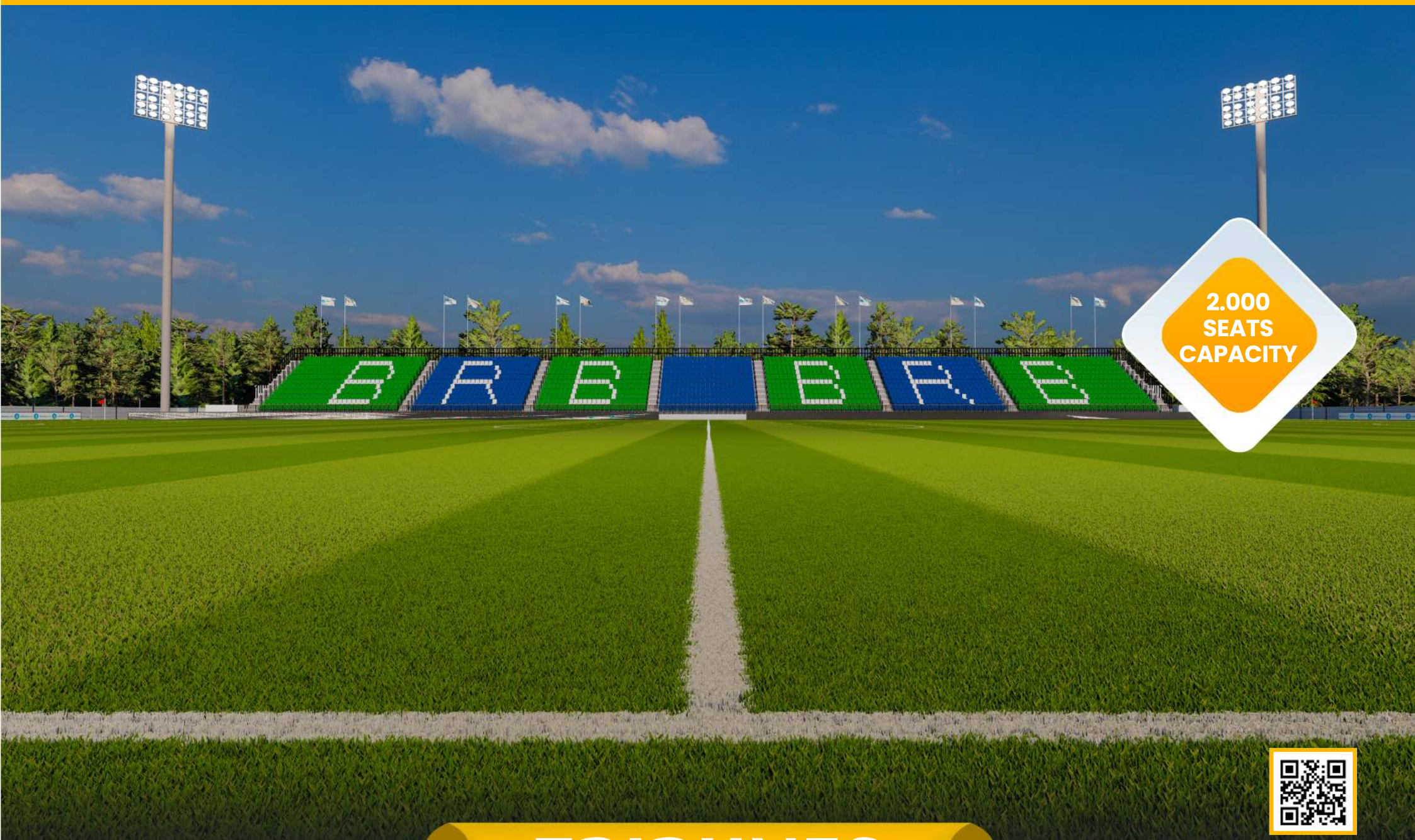


[info@reformsports.com](mailto:info@reformsports.com)



+90 212 533 70 73





2.000  
SEATS  
CAPACITY



# TRIBUNES



[reformsports.com](https://reformsports.com)



[info@reformsports.com](mailto:info@reformsports.com)



+90 212 533 70 73





100 VIP SEATS



ERGONOMIC DESIGN



# TRIBUNES



[reformsports.com](https://reformsports.com)



[info@reformsports.com](mailto:info@reformsports.com)



+90 212 533 70 73



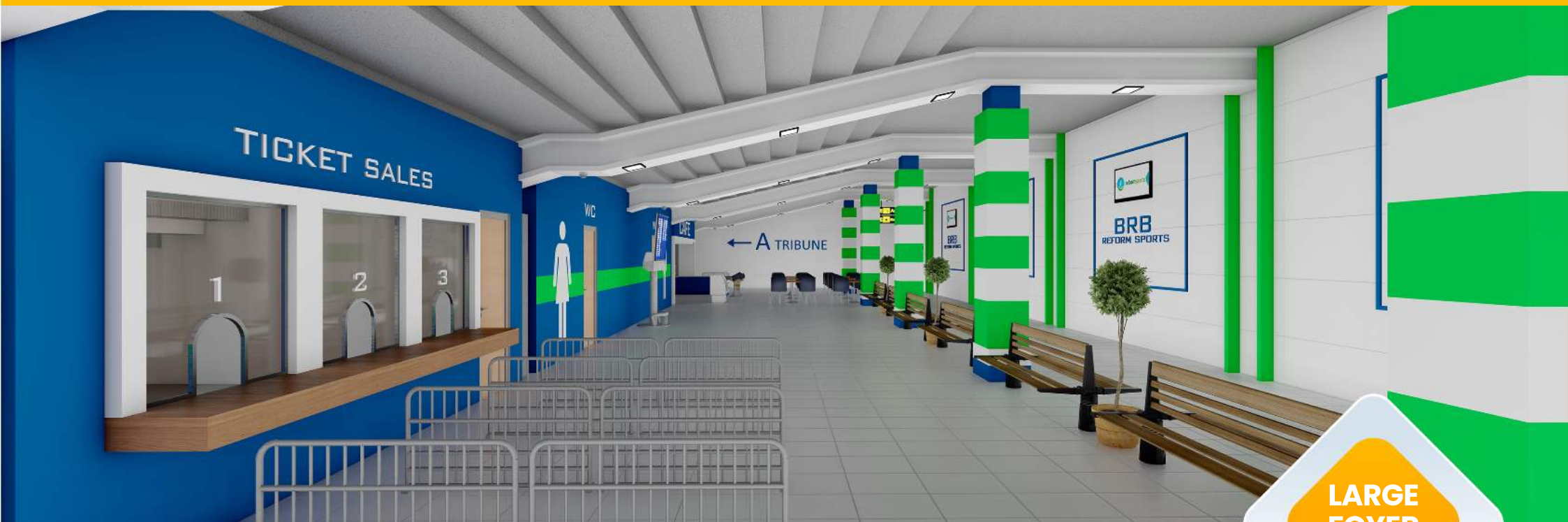


120 m<sup>2</sup>



## INTERIOR



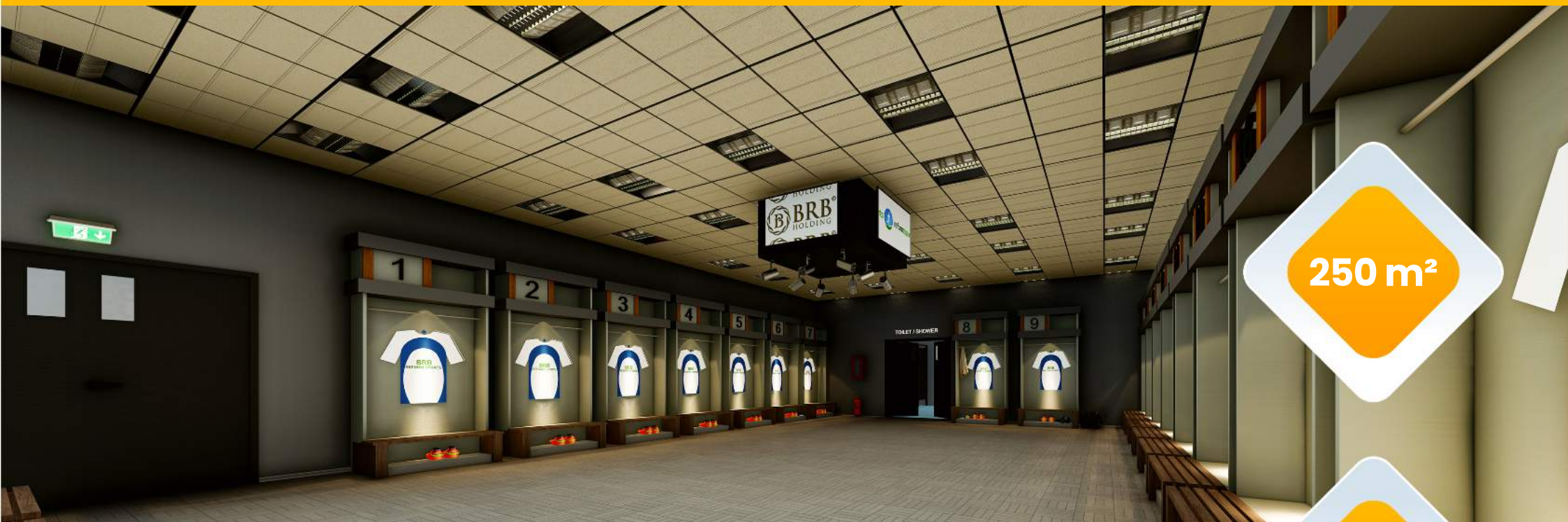


LARGE  
FOYER  
AREA



# INTERIOR





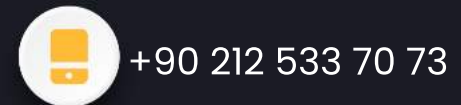
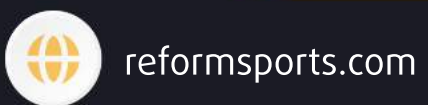
250 m<sup>2</sup>



2 FOR  
TEAMS



# LOCKER ROOM







70 m<sup>2</sup>  
FOR  
TEAMS



## WC & BATHROOM





40 m<sup>2</sup>



# MEDICAL ROOM



[reformsports.com](https://reformsports.com)

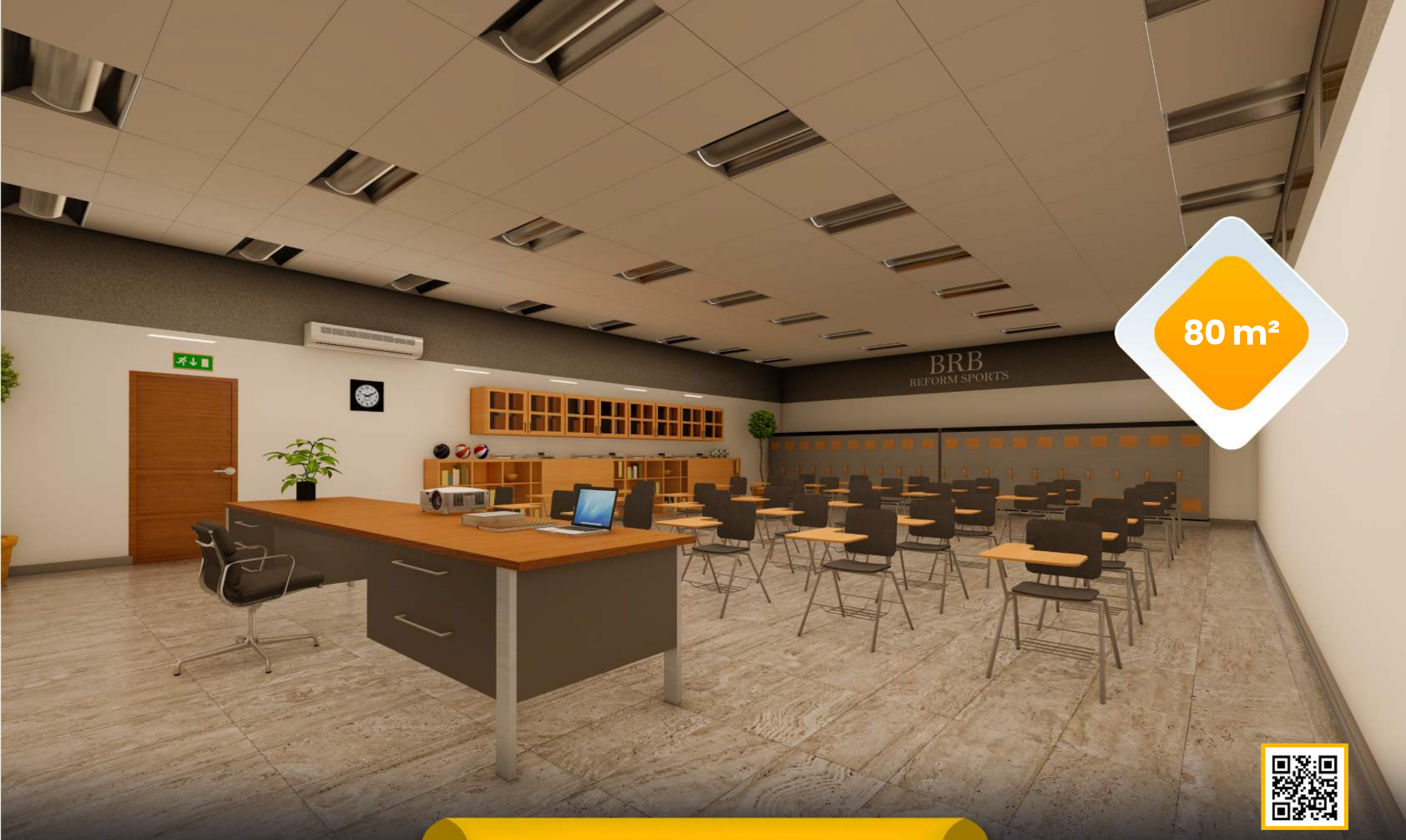


[info@reformsports.com](mailto:info@reformsports.com)



+90 212 533 70 73





80 m<sup>2</sup>



# SPORTS ACADEMY



[reformsports.com](https://reformsports.com)



[info@reformsports.com](mailto:info@reformsports.com)



+90 212 533 70 73

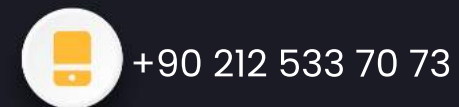




50 m<sup>2</sup>



## REFEREE ROOM







**BRB**  
REFORM SPORTS

30 m<sup>2</sup>



**BRB**  
REFORM SPORTS

LOCKER ROOM



## TECHNICAL DIRECTOR'S ROOM



[reformsports.com](https://reformsports.com)



[info@reformsports.com](mailto:info@reformsports.com)



+90 212 533 70 73





100 m<sup>2</sup>

## PRESS AND MEETING ROOM



[reformsports.com](https://reformsports.com)



[info@reformsports.com](mailto:info@reformsports.com)



+90 212 533 70 73





## PRESS AND MEETING ROOM



[reformsports.com](https://reformsports.com)

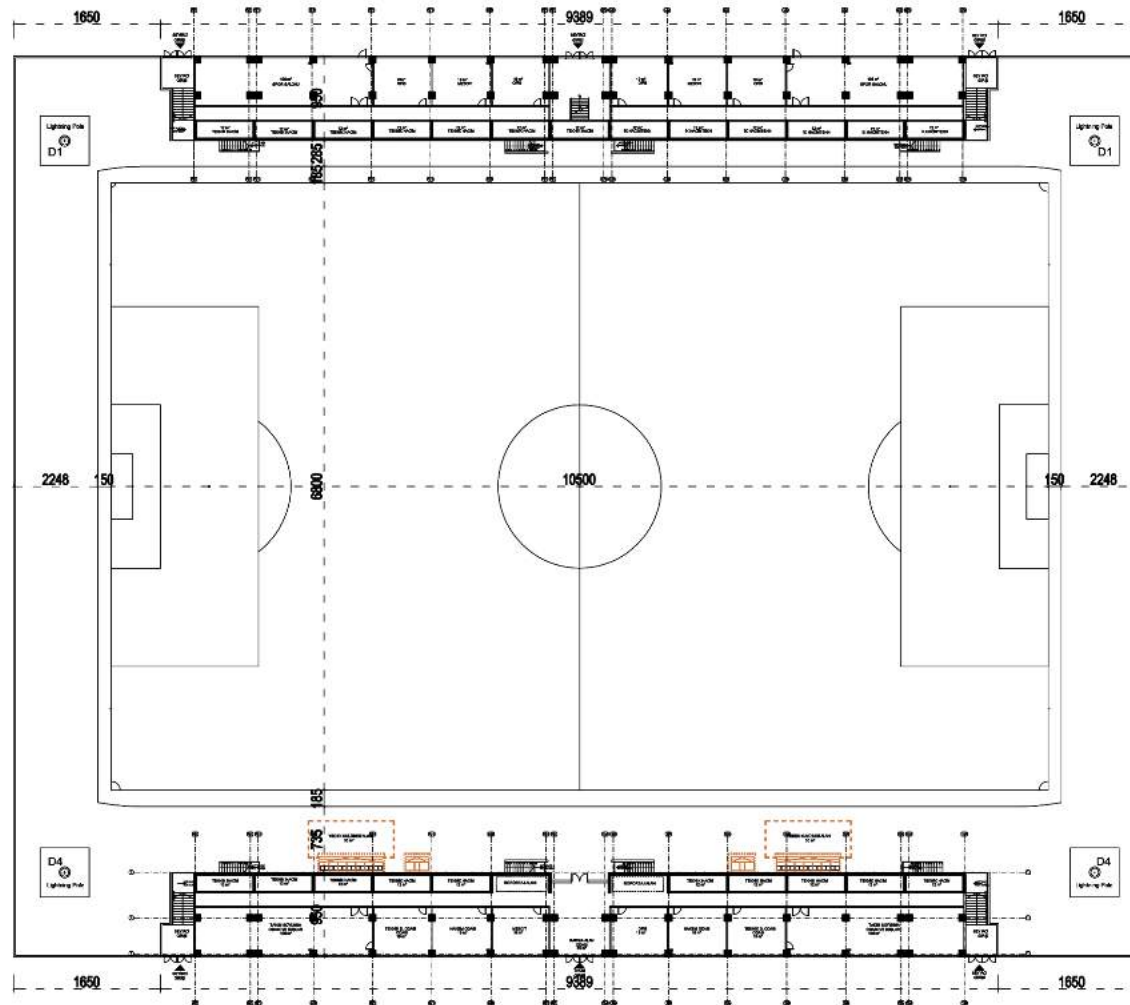


[info@reformsports.com](mailto:info@reformsports.com)



+90 212 533 70 73

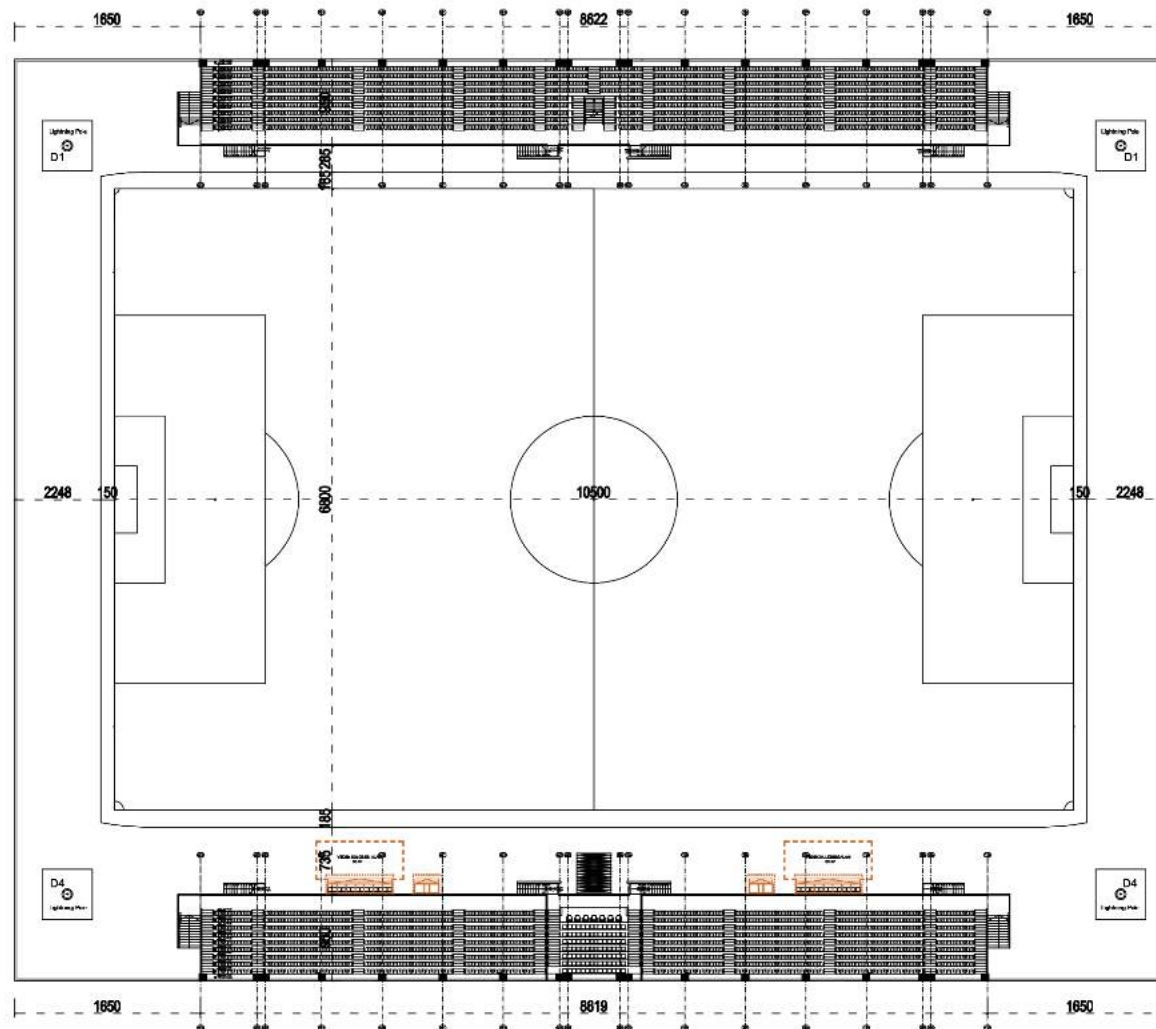




# GROUND FLOOR ARCHITECTURAL PLAN



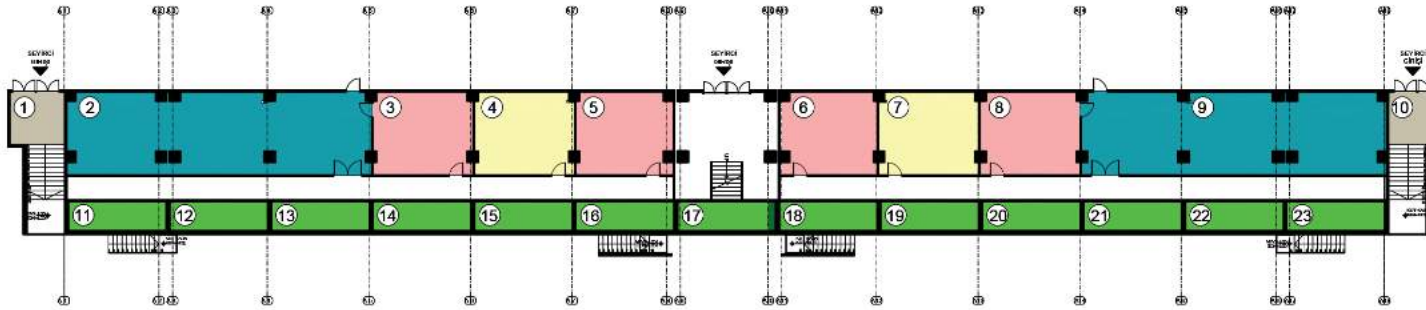




# FIRST FLOOR ARCHITECTURAL PLAN







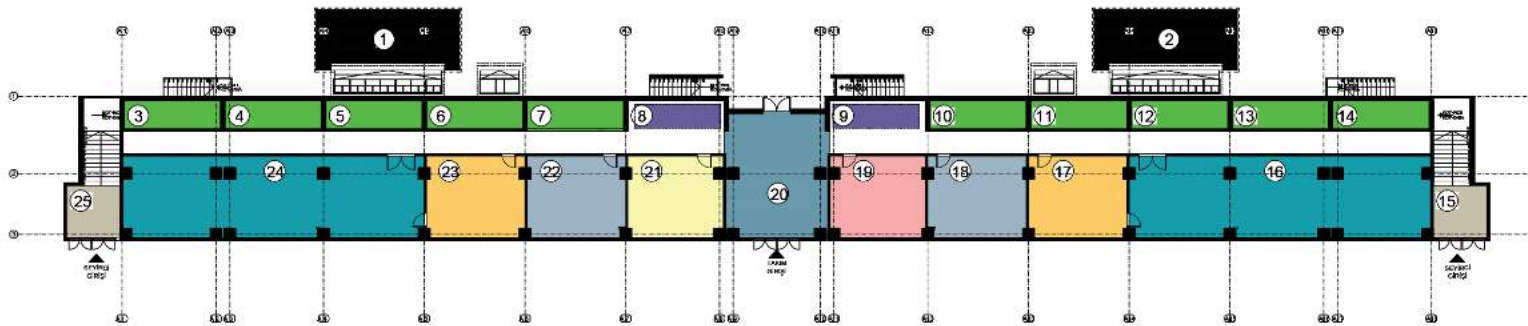
	NUMBER/ NOMBRE	COLOUR/ COULEUR	SQUARE METERS/ MÈTRES CARRÉS	VENUE NAME/ NOM DU SITE		NUMBER/ NOMBRE	COLOUR/ COULEUR	SQUARE METERS/ MÈTRES CARRÉS	VENUE NAME/ NOM DU SITE
	SEYIRCI TRIBÜNDÜ	1		11.90 m <sup>2</sup>		Audience Entry Entrée du public	SEYIRCI TRIBÜNDÜ	15	
2			106.00 m <sup>2</sup>	Fitness Center Centre de fitness	16			12.00 m <sup>2</sup>	Technical Volume Volume technique
3			19.00 m <sup>2</sup>	Office Bureau	17			12.00 m <sup>2</sup>	Technical Volume Volume technique
4			19.00 m <sup>2</sup>	Technical Volume Volume technique	18			12.00 m <sup>2</sup>	Technical Volume Volume technique
5			19.00 m <sup>2</sup>	Office Bureau	19			12.00 m <sup>2</sup>	Technical Volume Volume technique
6			19.00 m <sup>2</sup>	Office Bureau	20			12.00 m <sup>2</sup>	Technical Volume Volume technique
7			19.00 m <sup>2</sup>	Technical Volume Volume technique	21			12.00 m <sup>2</sup>	Technical Volume Volume technique
8			19.00 m <sup>2</sup>	Office Bureau	22			12.00 m <sup>2</sup>	Technical Volume Volume technique
9			106.00 m <sup>2</sup>	Fitness Center Centre de fitness	23			12.00 m <sup>2</sup>	Technical Volume Volume technique
10			11.90 m <sup>2</sup>	Audience Entry Entrée du public					
11			12.00 m <sup>2</sup>	Technical Volume Volume technique					
12			12.00 m <sup>2</sup>	Technical Volume Volume technique					
13			12.00 m <sup>2</sup>	Technical Volume Volume technique					
14			12.00 m <sup>2</sup>	Technical Volume Volume technique					

# TRIBUNES

## ARCHITECTURAL PLAN







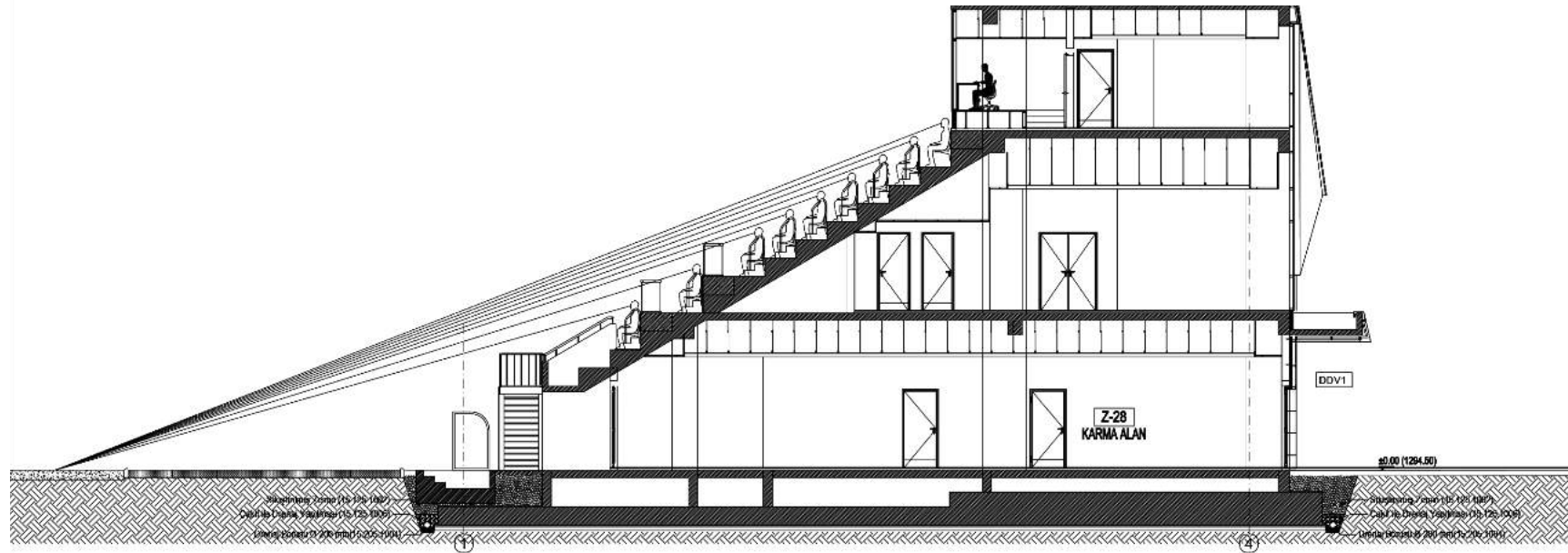
	NUMBER/ NOMBRE	COLOUR/ COULEUR	SQUARE METERS/ MÈTRES CARRÉS	VENUE NAME/ NOM DU SITE		NUMBER/ NOMBRE	COLOUR/ COULEUR	SQUARE METERS/ MÈTRES CARRÉS	VENUE NAME/ NOM DU SITE
MARATON TRIBUNÉ	1		55.00 m <sup>2</sup>	Reserve Bench Area Zone de banc de remplaçant	MARATON TRIBUNÉ	15		11.90 m <sup>2</sup>	Audience Entry Entrée du public
	2		55.00 m <sup>2</sup>	Reserve Bench Area Zone de banc de remplaçant		16		106.00 m <sup>2</sup>	Team Dressing R- S. Vestiaires et douches de l'équipe
	3		12.00 m <sup>2</sup>	Technical Volume Volume technique		17		19.00 m <sup>2</sup>	Technical Director's Room salle de carrosse
	4		12.00 m <sup>2</sup>	Technical Volume Volume technique		18		19.00 m <sup>2</sup>	Referee's Room salle des arbitres
	5		12.00 m <sup>2</sup>	Technical Volume Volume technique		19		19.00 m <sup>2</sup>	Office Bureau
	6		12.00 m <sup>2</sup>	Technical Volume Volume technique		20		55.00 m <sup>2</sup>	Mixed Field Karma Alan
	7		12.00 m <sup>2</sup>	Technical Volume Volume technique		21		19.00 m <sup>2</sup>	Technical Volume Volume technique
	8		12.00 m <sup>2</sup>	Interview Area Zone de reportage		22		19.00 m <sup>2</sup>	Referee's Room salle des arbitres
	9		12.00 m <sup>2</sup>	Interview Area Zone de reportage		23		19.00 m <sup>2</sup>	Technical Director's Room salle de carrosse
	10		12.00 m <sup>2</sup>	Technical Volume Volume technique		24		106.00 m <sup>2</sup>	Team Dressing R- S. Vestiaires et douches de l'équipe
	11		12.00 m <sup>2</sup>	Technical Volume Volume technique		25		11.90 m <sup>2</sup>	Audience Entry Entrée du public
	12		12.00 m <sup>2</sup>	Technical Volume Volume technique					
	13		12.00 m <sup>2</sup>	Technical Volume Volume technique					
	14		12.00 m <sup>2</sup>	Technical Volume Volume technique					

# TRIBUNES

## ARCHITECTURAL PLAN





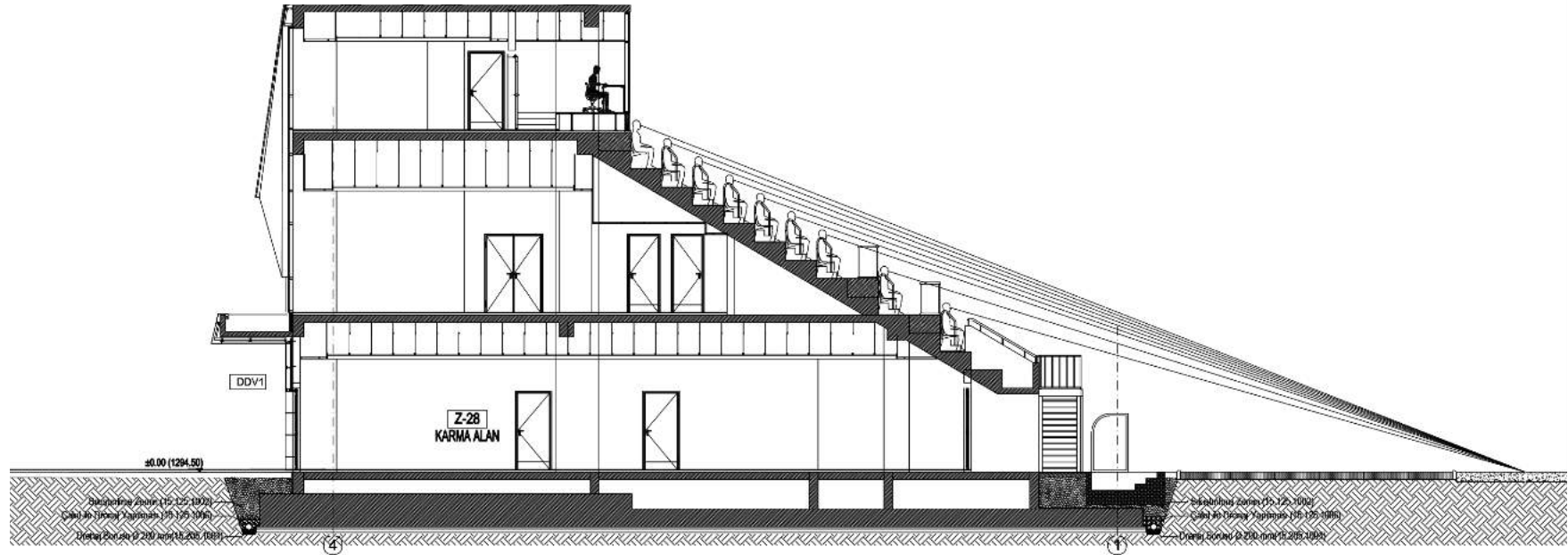


# TRIBUNES

## ARCHITECTURAL PLAN







# TRIBUNES

## ARCHITECTURAL PLAN







reform<sup>®</sup>  
sports



[www.reformsports.com](http://www.reformsports.com)