



reform<sup>®</sup>  
sports

*5.000 Seats Stadium  
With Athletics Tracks*



HEADQUARTER - İSTANBUL/TÜRKİYE

REFORM SPORTS



[reformsports.com](https://www.reformsports.com)



[info@reformsports.com](mailto:info@reformsports.com)



+90 212 533 70 73





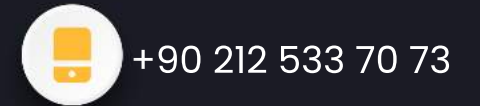
# FACTORY

## TEKİRDAĞ/TÜRKİYE

TURF PRODUCTION CAPACITY 11.000.000 M<sup>2</sup> / YEAR •

RUBBER PRODUCTION CAPACITY 300.000 M<sup>2</sup> / YEAR •

STEEL CONSTRUCTION CAPACITY 12.000 TON / YEAR •



# ○ WE ARE LEADING ○

- STADIUMS
- SPORTS ARENA
- TURN-KEY SPORTS COMPLEXES
- FIFA FOOTBALL FIELDS
- PROFESSIONAL FOOTBALL FIELDS
- HYBRID TURF FOOTBALL FIELDS
- ATHLETICS TRACKS
- METAL CONSTRUCTION
- INDOOR SPORTS COMPLEXES
- OUTDOOR SPORTS COMPLEXES
- PADEL COURTS
- FOOT 5 COURTS
- BASKETBALL, VOLLEYBALL, HANDBALL, TENNIS COURT
- HOCKEY, CRICKET FIELDS
- GOLF COURSES
- MULTISPORT FLOORING
- LANDSCAPING
- CHILDREN PLAY GROUNDS



# WHY REFORM SPORTS?

- OVER 30 YEARS OF EXPERIENCE
- TURN-KEY SOLUTIONS
- FLEXIBILITY AND FAST DELIVERY
- ENVIRONMENTALLY FRIENDLY
- RECYCLABLE MATERIALS
- HIGH QUALITY AND COMPETITIVE PRICES
- WARRANTY AND DURABILITY
- INTERNATIONALLY CERTIFIED



[reformsports.com](https://www.reformsports.com)



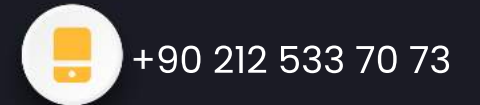
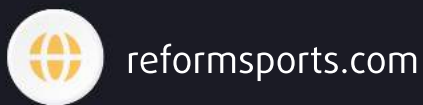
[info@reformsports.com](mailto:info@reformsports.com)



+90 212 533 70 73



BRB  
HOLDING





# HIGHEST QUALITY

CERTIFIED BY INTERNATIONAL AUTHORITIES





**7**  
**REGIONS**

**105**  
**COUNTRIES**

**15.000**  
**PROJECTS**



## AFRICA

NIGERIA	NIJER	ETHIOPIA	SOUTH SUDAN
GANA	SIERRA LEONE	KENYA	MAURITIUS
SENEGAL	DEM. REP. OF CONGO	UGANDA	
IVORY COAST	CAMEROON	TANZANIA	
GAMBIA	KONGO	RWANDA	
MALI	GABON	MOZAMBIQUE	
GUINEA	CHAD	BURUNDI	
MAURITANIA	SOUTH AFRICA	DJIBOUTI	
BURKINA FASO	ZAMBIA	SOMALIA	
TOGO	SUDAN		

## NORTH AFRICA

EGYPT  
MOROCCO  
TUNISIA  
ALGERIA  
LIBYA

## ASSIA

RUSSIA	INDIA
AZERBAIJAN	MALAYSIA
TURKMENISTAN	PAKISTAN
UZBEKISTAN	BANGLADESH
AFGHANISTAN	PHILIPPINES
KAZAKHSTAN	HONG KONG
KYRGYZSTAN	ARMENIA
TAIIKISTAN	GEORGIA

## AMERICA

USA	HAITI
CANADA	MARTINIQUE
PANAMA	GUYANA
CHILE	FRENCH GUIANA

## EUROPE

GERMANY	UKRAINE	MALTA
FRANCE	POLAND	BELARUS
UK	PORTUGAL	
IRELAND	DENMARK	
ITALY	NORWAY	
SPAIN	MOLDOVA	
AUSTRIA	CZECH REPUBLIC	
NETHERLANDS	SLOVAKIA	
BELGIUM	LATVIA	

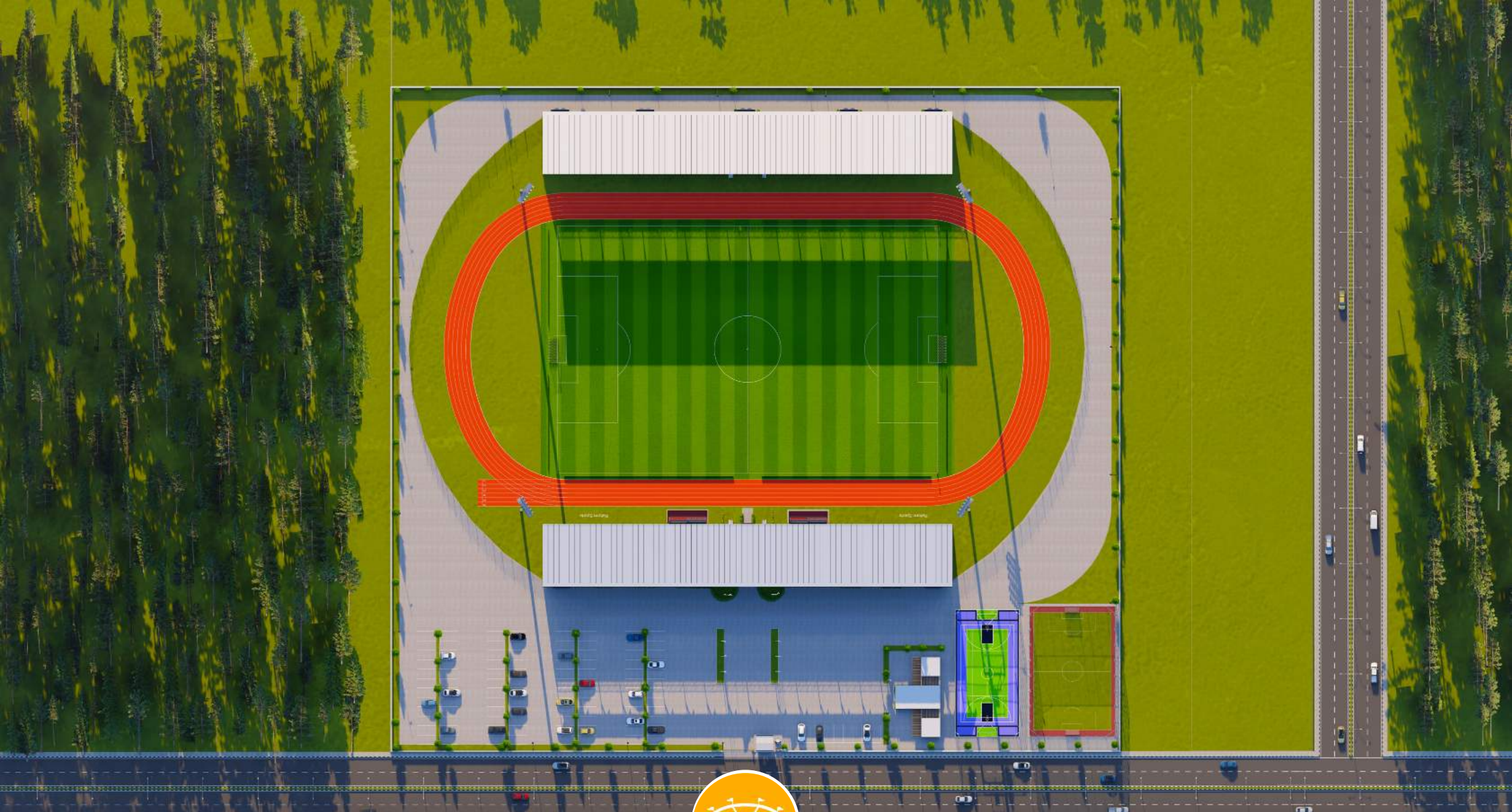
## BALKANS

TÜRKIYE	CROATIA
BOSNIA	ALBANIA
BULGARIA	GREECE
ROMANIA	SERBIA
KOSOVO	SLOVENIA
MACEDONIA	MONTENEGRO

## MIDDLE EAST

SAUDI ARABIA	BAHRAIN
KUWAIT	YEMEN
QATAR	LEBANON
UAE	JORDAN
OMAN	CYPRUS
IRAQ	KKTC





**5.000 SEATS CAPACITY**





# ▶ STADIUM

- Football and athletics playgrounds in accordance with the FIFA and World Athletics standards.
- Large circulation area on the ground floor that can accommodate the general public.
- Covered Tribunes, technical rooms, cafes and offices.





# STADIUM

- 1 STANDARD FOOTBALL FIELD
- 2 ATHLETICS TRACK
- 3 TRIBUNES
- 4 MULTI-PURPOSE SPORTS FIELD
- 5 FOOTBALL TRAINING FIELD







# STADIUM



[reformsports.com](https://reformsports.com)



[info@reformsports.com](mailto:info@reformsports.com)



+90 212 533 70 73



# STADIUM

## TECHNICAL SPECIFICATIONS

- 20.000m<sup>2</sup> Total construction area
- 2.000m<sup>2</sup> indoor construction area
- 7.140m<sup>2</sup> FIFA standards football field
- 3.500 m<sup>2</sup> Sandwich system running track
- 5.000 seating capacity roofed tribunes
- 150 VIP Tribunes,
- 5 Protocol Tribunes
- Goal post and nets,
- Corner poles
- Substitute benches
- Referee bench
- Ligthing system
- Led Score Board
- Fire system
- Emergency alert system
- Car parking area for 100 cars
- Sound system (Optional)

## LIVING AREAS

- Cafeterias
- Fitnes center
- Locker rooms
- Referee locker rooms
- Public restrooms
- Disbaled restrooms
- Observers and representatives rooms
- Meeting rooms
- Facility supervisor room
- Staff rooms
- Security rooms
- Offices
- UPS room
- Electriciry controlling room
- Camera System (Optional)
- Card access control system (Optional)
- Generator (Optional)



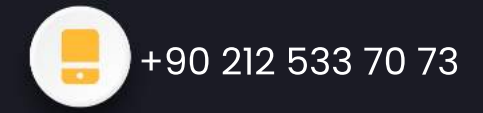




20.000 m<sup>2</sup>  
TOTAL  
CONSTRUCTION  
AREA



# STADIUM







2.000 m<sup>2</sup>  
INDOOR  
AREA



# STADIUM



[reformsports.com](https://reformsports.com)



[info@reformsports.com](mailto:info@reformsports.com)



+90 212 533 70 73

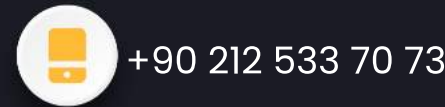




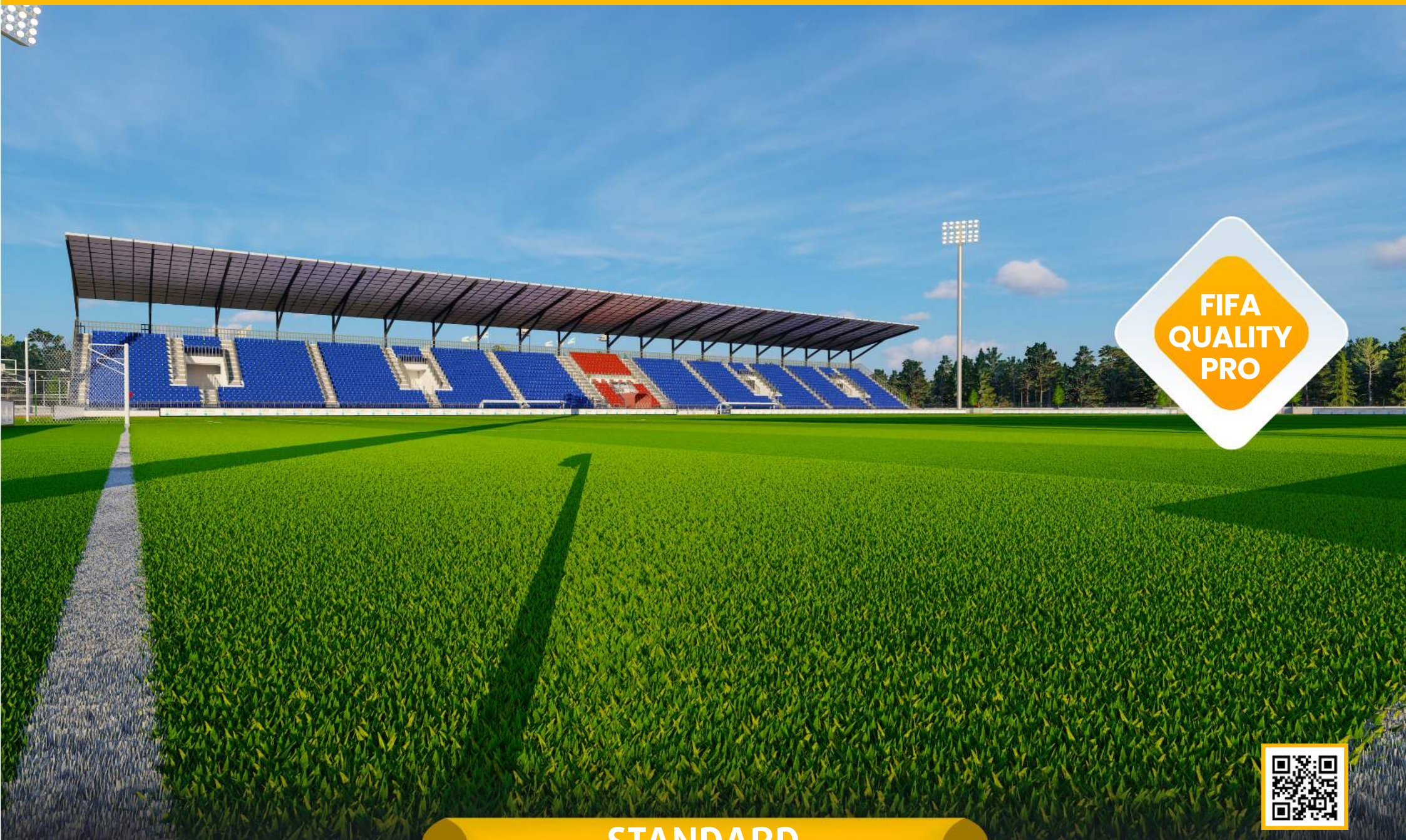
**ERGONOMIC  
DESIGN**



# STADIUM







# STANDARD FOOTBALL FIELD



[reformsports.com](https://reformsports.com)



[info@reformsports.com](mailto:info@reformsports.com)



+90 212 533 70 73



## High Quality

Our products are produced with the highest quality, ethical standards and in accordance with the international standards



## Resistant

Our abrasion and wear resistant products come with different heights, colour options and unique characteristics



## Long Lasting

Artificial turfs are easy to maintain and cheap, as well as have a very long life with low maintenance



REFORM SPORTS' synthetic turf is produced with new generation monofilament yarns provides high-quality and provides maximum-performance for training and professional football pitches. Delays wear and tear due to modern yarn design and features. For many years; ball roll and bouncing and shock absorbing values remain in accordance with international standards. It doesn't reduce player's performance, it is environmentally friendly and recyclable.

# ARTIFICIAL GRASS



## Natural Appearance

It is produced with monofilament yarns for aesthetic and more natural appearance



## High UV Resistance

It is produced with special UV resistant additive. Besides being resistant to UV rays, it is also resistant to cold weather



## Nature Friendly

Our products are manufactured with environmental awareness and consist of recyclable materials with the use of effective technology and com-  
pone



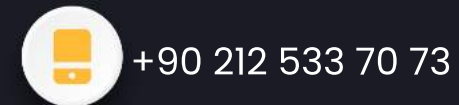




7.140 m<sup>2</sup>



## STANDARD FOOTBALL FIELD





**INTERNATIONAL  
MATCH  
STANDARD**

**FIFA  
STANDARD  
ARTIFICIAL  
GRASS**



## STANDARD FOOTBALL FIELD



[reformsports.com](https://reformsports.com)



[info@reformsports.com](mailto:info@reformsports.com)



+90 212 533 70 73





**WORLD  
ATHLETICS  
FEDERATION  
CERTIFIED  
ATHLETICS  
TRACK**



# ATHLETICS TRACK



[reformsports.com](https://reformsports.com)



[info@reformsports.com](mailto:info@reformsports.com)



+90 212 533 70 73



## High Quality

Our products are produced with the highest quality, ethical standards and in accordance with the international standards



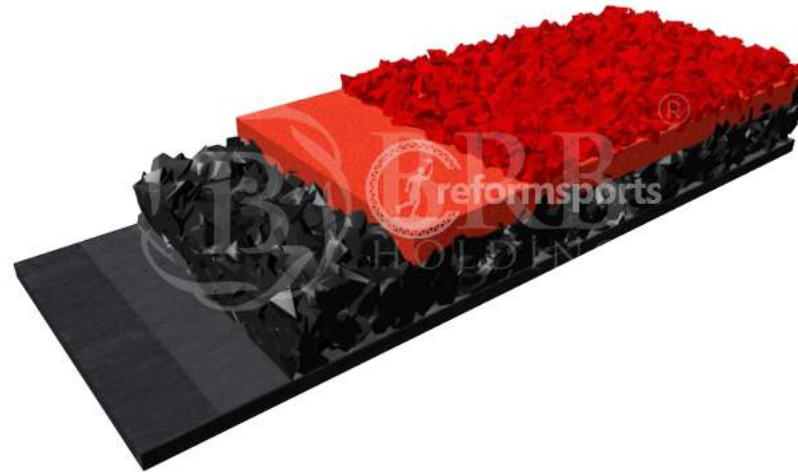
## Resistant

Our abrasion and wear resistant products come with different heights, colour options and unique characteristics



## Long Lasting

Artificial turfs are easy to maintain and cheap, as well as have a very long life with low maintenance



## Natural Appearance

It is produced with monofilament yarns for aesthetic and more natural appearance



## High UV Resistance

It is produced with special UV resistant additive. Besides being resistant to UV rays, it is also resistant to cold weather



## Nature Friendly

Our products are manufactured with environmental awareness and consist of recyclable materials with the use of effective technology and components



Sandwich System Floor is durable, long lasting and resistant to all weather conditions. It can be used for international competitions. The system is water permeable and has shock absorbing. It is a ground resistant to puncture. The floor has a surface, which prevents slipping.



# SANDWICH SYSTEM



[reformsports.com](https://reformsports.com)



[info@reformsports.com](mailto:info@reformsports.com)



+90 212 533 70 73





**6 LANES  
RUNNING  
RACKS**



# ATHLETICS TRACK



[reformsports.com](https://reformsports.com)



[info@reformsports.com](mailto:info@reformsports.com)



+90 212 533 70 73





## ATHLETICS TRACK



[reformsports.com](https://reformsports.com)

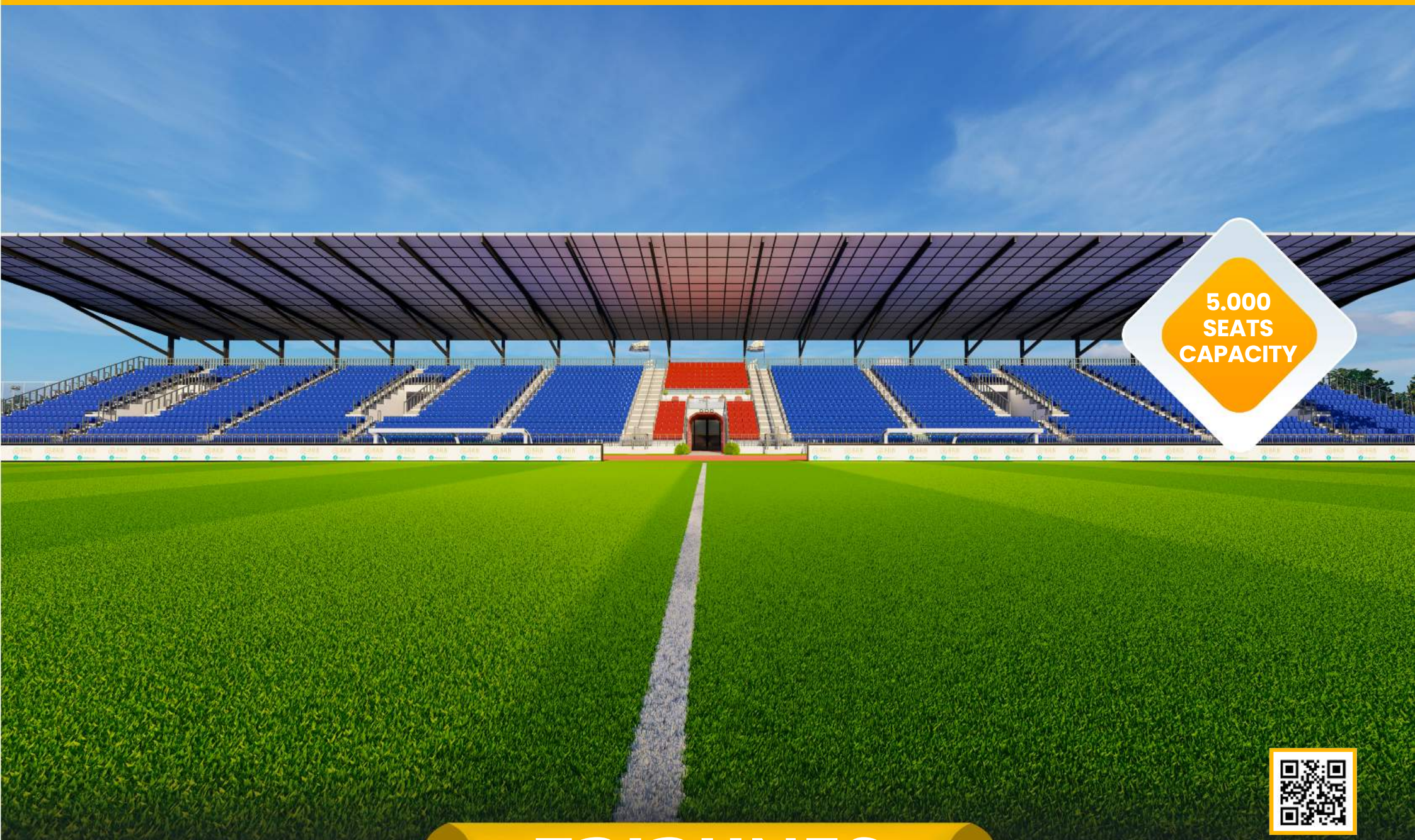


[info@reformsports.com](mailto:info@reformsports.com)



+90 212 533 70 73





5.000  
SEATS  
CAPACITY



# TRIBUNES



[reformsports.com](https://reformsports.com)



[info@reformsports.com](mailto:info@reformsports.com)



+90 212 533 70 73





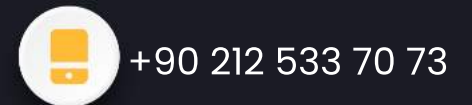
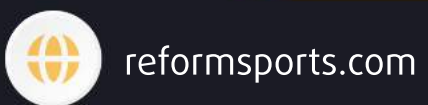
150 VIP SEATS



ERGONOMIC DESIGN



# TRIBUNES







# MULTI-PURPOSE SPORTS FIELD



[reformsports.com](https://reformsports.com)



[info@reformsports.com](mailto:info@reformsports.com)



+90 212 533 70 73





# FOOTBALL TRAINING FIELD



[reformsports.com](https://reformsports.com)



[info@reformsports.com](mailto:info@reformsports.com)



+90 212 533 70 73



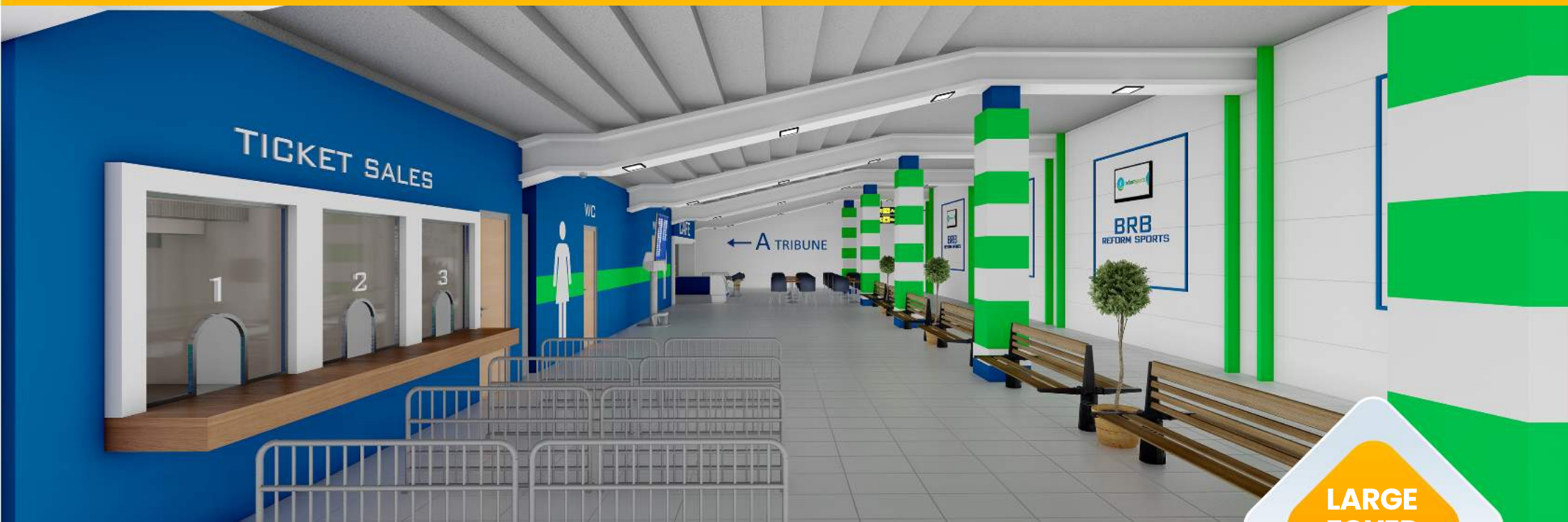


2.000 m<sup>2</sup>



## INTERIOR



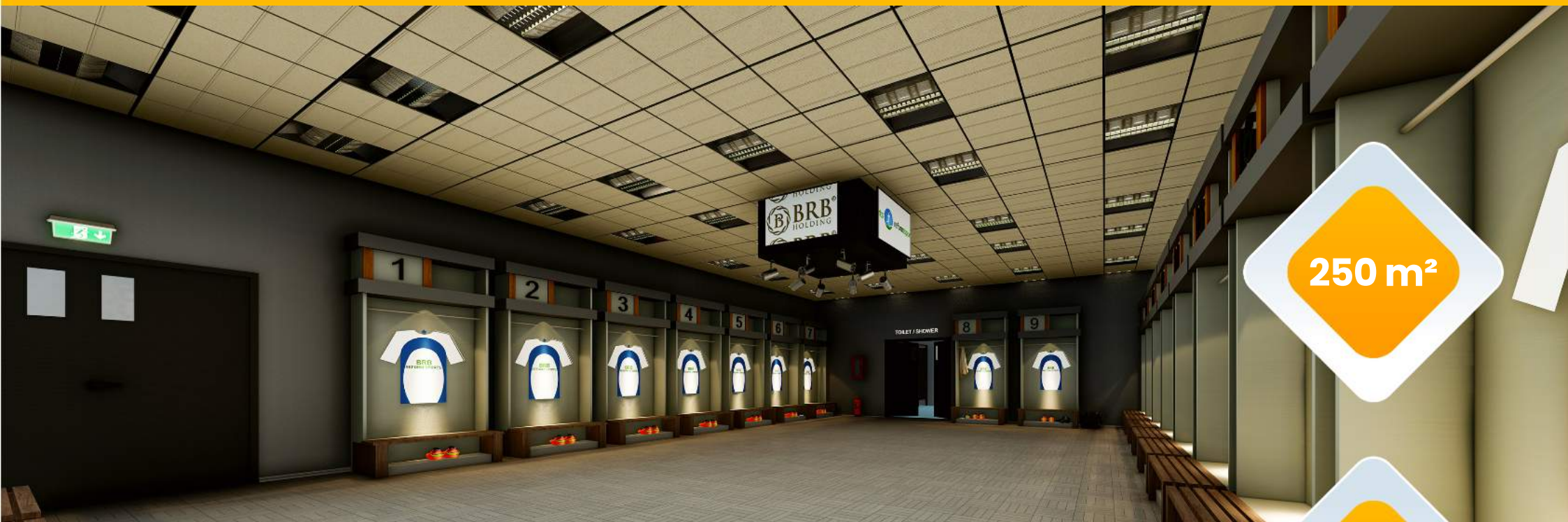


LARGE  
FOYER  
AREA



# INTERIOR



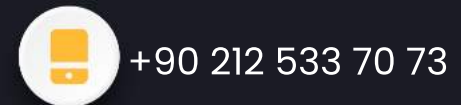


250 m<sup>2</sup>



2 FOR  
TEAMS

# LOCKER ROOM







120 M<sup>2</sup>  
FOR  
TEAMS



## WC & BATHROOM



[reformsports.com](https://reformsports.com)



[info@reformsports.com](mailto:info@reformsports.com)



+90 212 533 70 73





40 m<sup>2</sup>



# MEDICAL ROOM



[reformsports.com](https://reformsports.com)

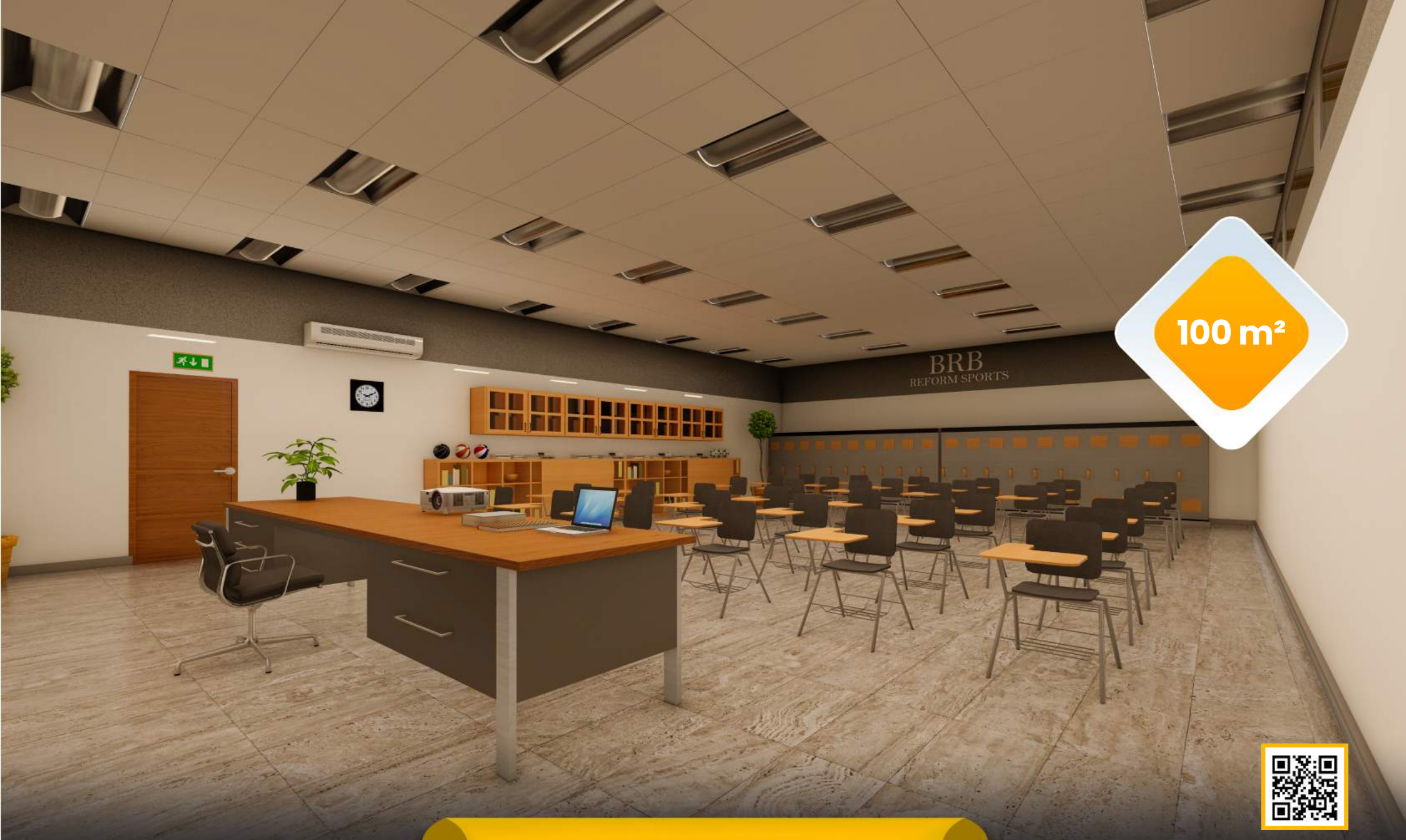


[info@reformsports.com](mailto:info@reformsports.com)



+90 212 533 70 73





100 m<sup>2</sup>



# SPORTS ACADEMY



[reformsports.com](https://reformsports.com)



[info@reformsports.com](mailto:info@reformsports.com)



+90 212 533 70 73





## REFEREE ROOM



[reformsports.com](https://www.reformsports.com)



[info@reformsports.com](mailto:info@reformsports.com)

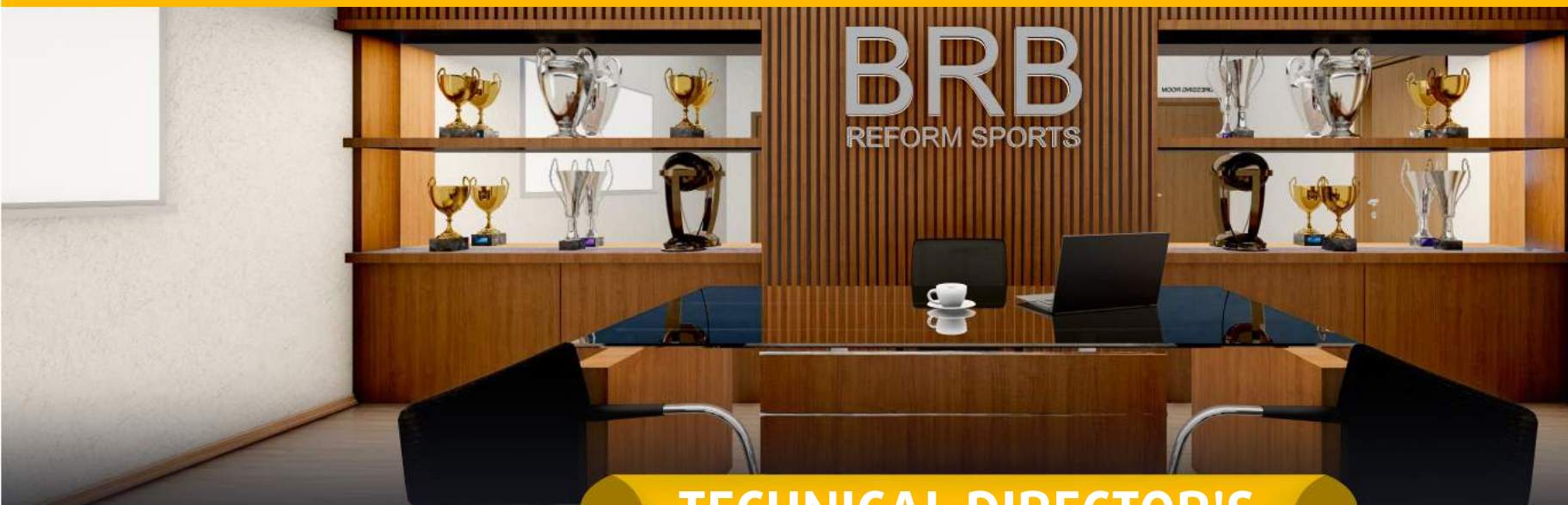


+90 212 533 70 73

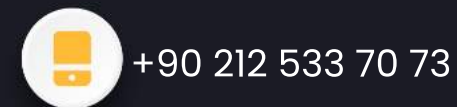
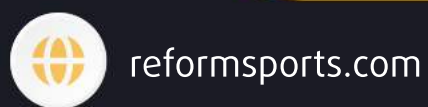




40 m<sup>2</sup>



## TECHNICAL DIRECTOR'S ROOM







100 m<sup>2</sup>



## PRESS AND MEETING ROOM



[reformsports.com](https://reformsports.com)



[info@reformsports.com](mailto:info@reformsports.com)

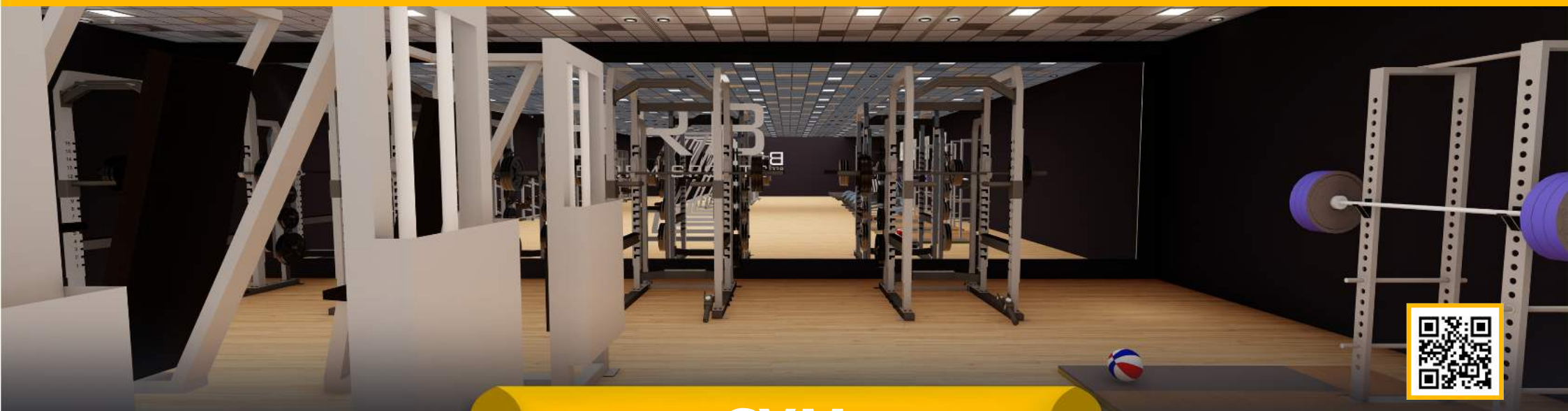


+90 212 533 70 73





120 m<sup>2</sup>



# GYM



[reformsports.com](https://reformsports.com)

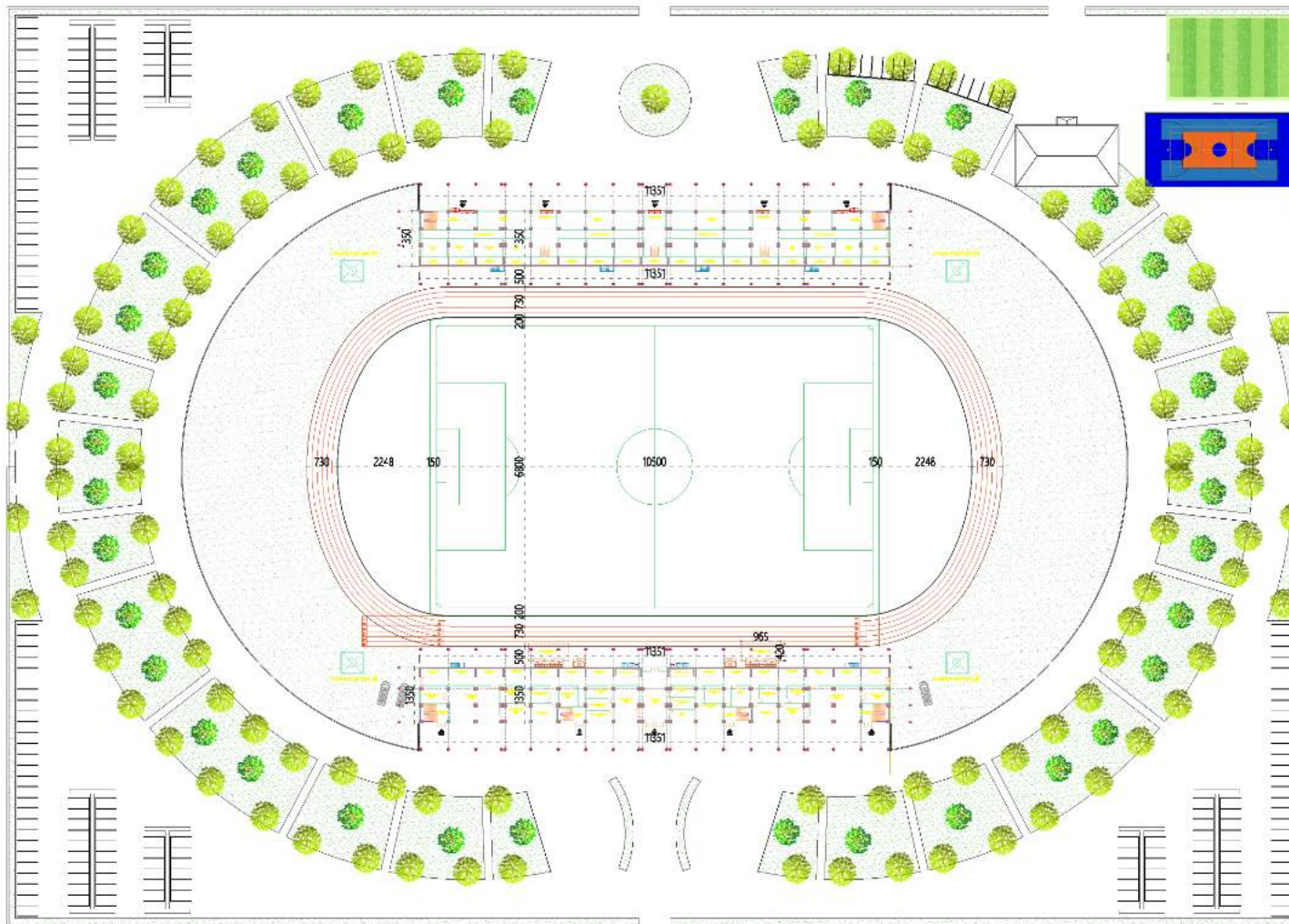


[info@reformsports.com](mailto:info@reformsports.com)



+90 212 533 70 73

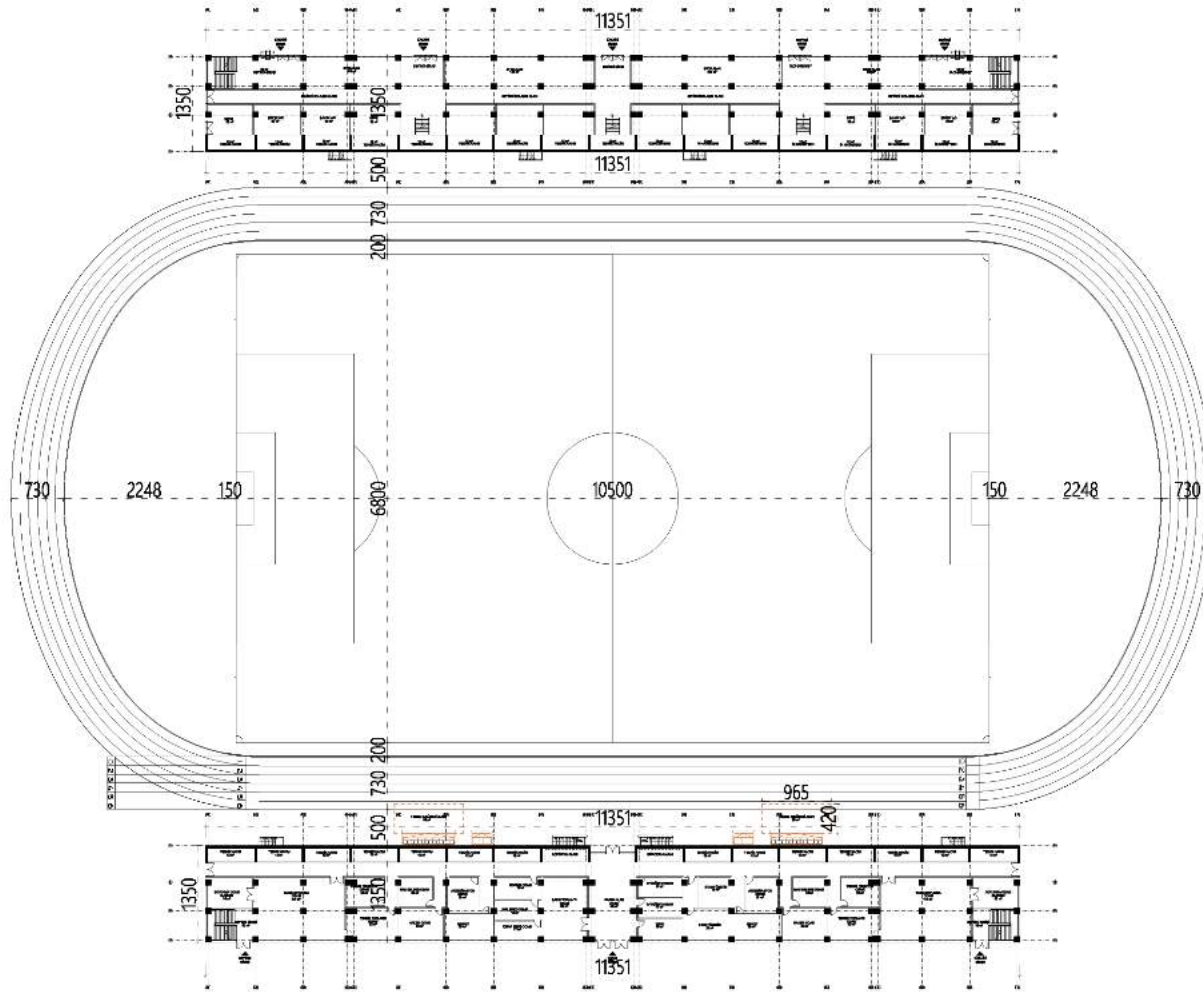




# GENERAL LAYOUT ARCHITECTURAL PLAN





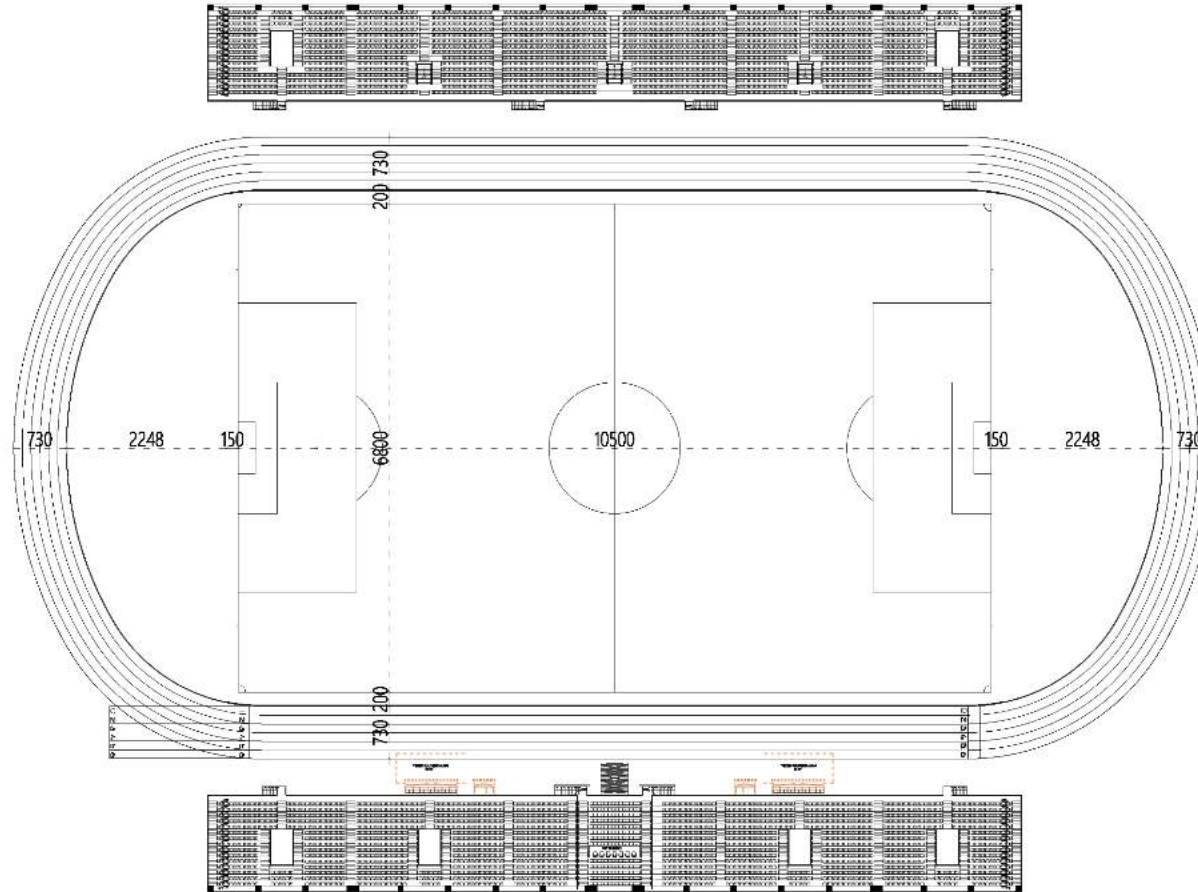


# GROUND FLOOR ARCHITECTURAL PLAN





2634 SEATS



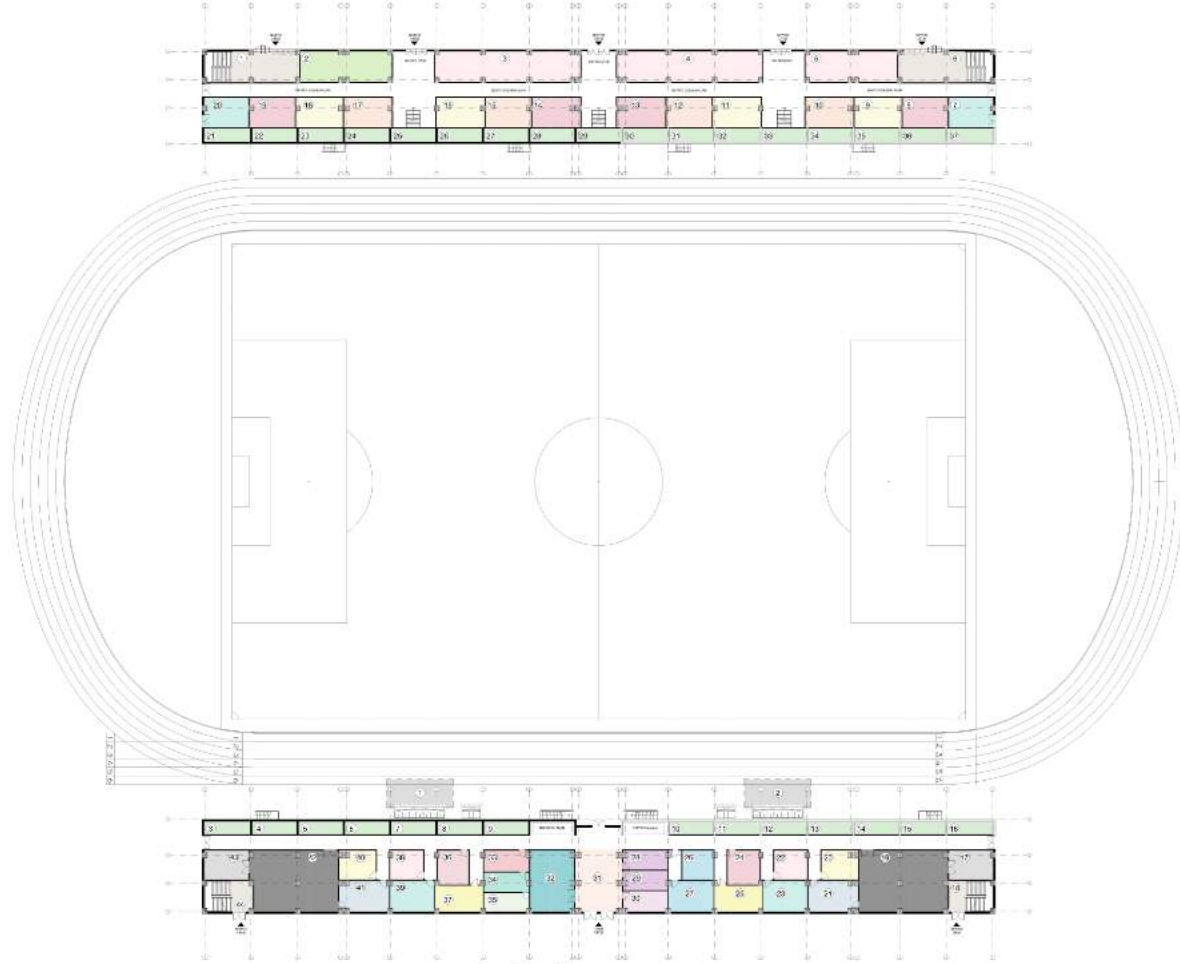
2366 SEATS

# FIRST FLOOR ARCHITECTURAL PLAN





SEYİRCİ TRİBÜNÜ / SPECTATOR TRIBUNE



MARATON TRİBÜNÜ / MARATHON TRIBUNE

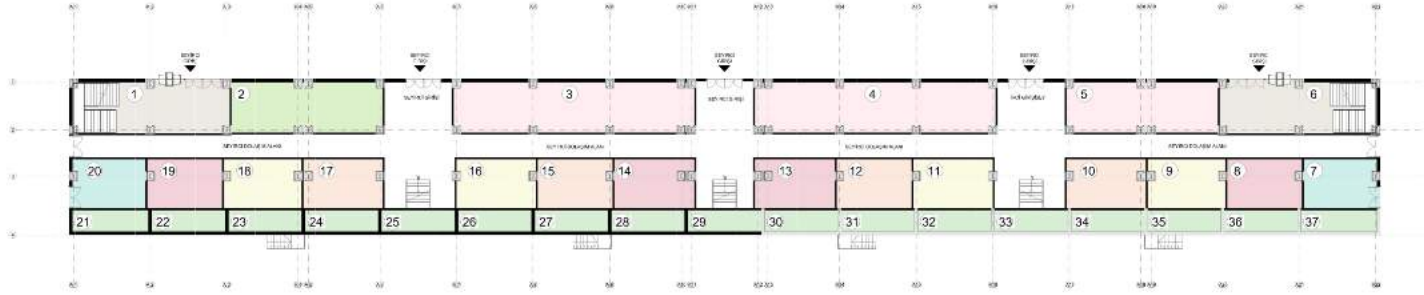
# TRIBUNES

## ARCHITECTURAL PLAN





## SEYİRCİ TRIBÜNÜ / SPECTATOR TRIBUNE



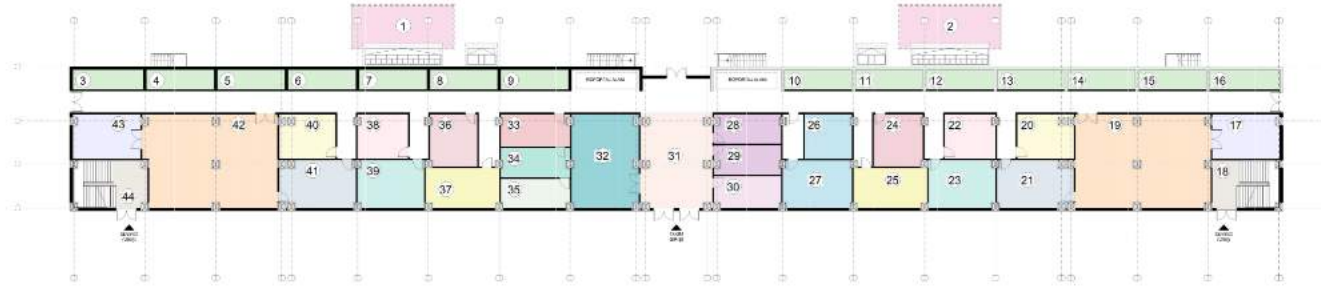
NUMBER/ SAYI	COLOUR/ RENK	SQUARE METERS/ METREKARE	VENUE NAME/ MAHAL ADI
1		40.00 m <sup>2</sup>	Audience Entry Seyirci Girişi
2		55.00 m <sup>2</sup>	Stock Area Stok Alan
3		86.00 m <sup>2</sup>	Stock Area Stok Alan
4		86.00 m <sup>2</sup>	Stock Area Stok Alan
5		54.00 m <sup>2</sup>	Stock Area Stok Alan
6		40.00 m <sup>2</sup>	Audience Entry Seyirci Girişi
7		26.50 m <sup>2</sup>	Store Depo
8		27.00 m <sup>2</sup>	Male's wc Erkek Wc
9		27.50 m <sup>2</sup>	Woman's wc Kadın Wc
10		28.00 m <sup>2</sup>	Buffet Büfe
11		28.40 m <sup>2</sup>	Woman's wc Kadın Wc
12		27.00 m <sup>2</sup>	Buffet Büfe
13		28.20 m <sup>2</sup>	Male's wc Erkek Wc
14		28.20 m <sup>2</sup>	Male's wc Erkek Wc
15		27.00 m <sup>2</sup>	Buffet Büfe
16		28.40 m <sup>2</sup>	Woman's wc Kadın Wc
17		28.00 m <sup>2</sup>	Buffet Büfe
18		27.50 m <sup>2</sup>	Woman's wc Kadın Wc
19		27.00 m <sup>2</sup>	Male's wc Erkek Wc
20		26.50 m <sup>2</sup>	Store Depo
21		12.00 m <sup>2</sup>	Technical Volume Teknik Hacim
22		12.00 m <sup>2</sup>	Technical Volume Teknik Hacim
23		12.00 m <sup>2</sup>	Technical Volume Teknik Hacim
24		12.00 m <sup>2</sup>	Technical Volume Teknik Hacim
25		12.00 m <sup>2</sup>	Technical Volume Teknik Hacim
26		12.00 m <sup>2</sup>	Technical Volume Teknik Hacim
27		12.00 m <sup>2</sup>	Technical Volume Teknik Hacim
28		12.00 m <sup>2</sup>	Technical Volume Teknik Hacim
29		12.00 m <sup>2</sup>	Technical Volume Teknik Hacim
30		12.00 m <sup>2</sup>	Technical Volume Teknik Hacim
31		12.00 m <sup>2</sup>	Technical Volume Teknik Hacim
32		12.00 m <sup>2</sup>	Technical Volume Teknik Hacim
33		12.00 m <sup>2</sup>	Technical Volume Teknik Hacim
34		12.00 m <sup>2</sup>	Technical Volume Teknik Hacim
35		12.00 m <sup>2</sup>	Technical Volume Teknik Hacim
36		12.00 m <sup>2</sup>	Technical Volume Teknik Hacim
37		12.00 m <sup>2</sup>	Technical Volume Teknik Hacim

# TRIBUNES ARCHITECTURAL PLAN





## MARATON TRİBÜNÜ / MARATHON TRIBUNE

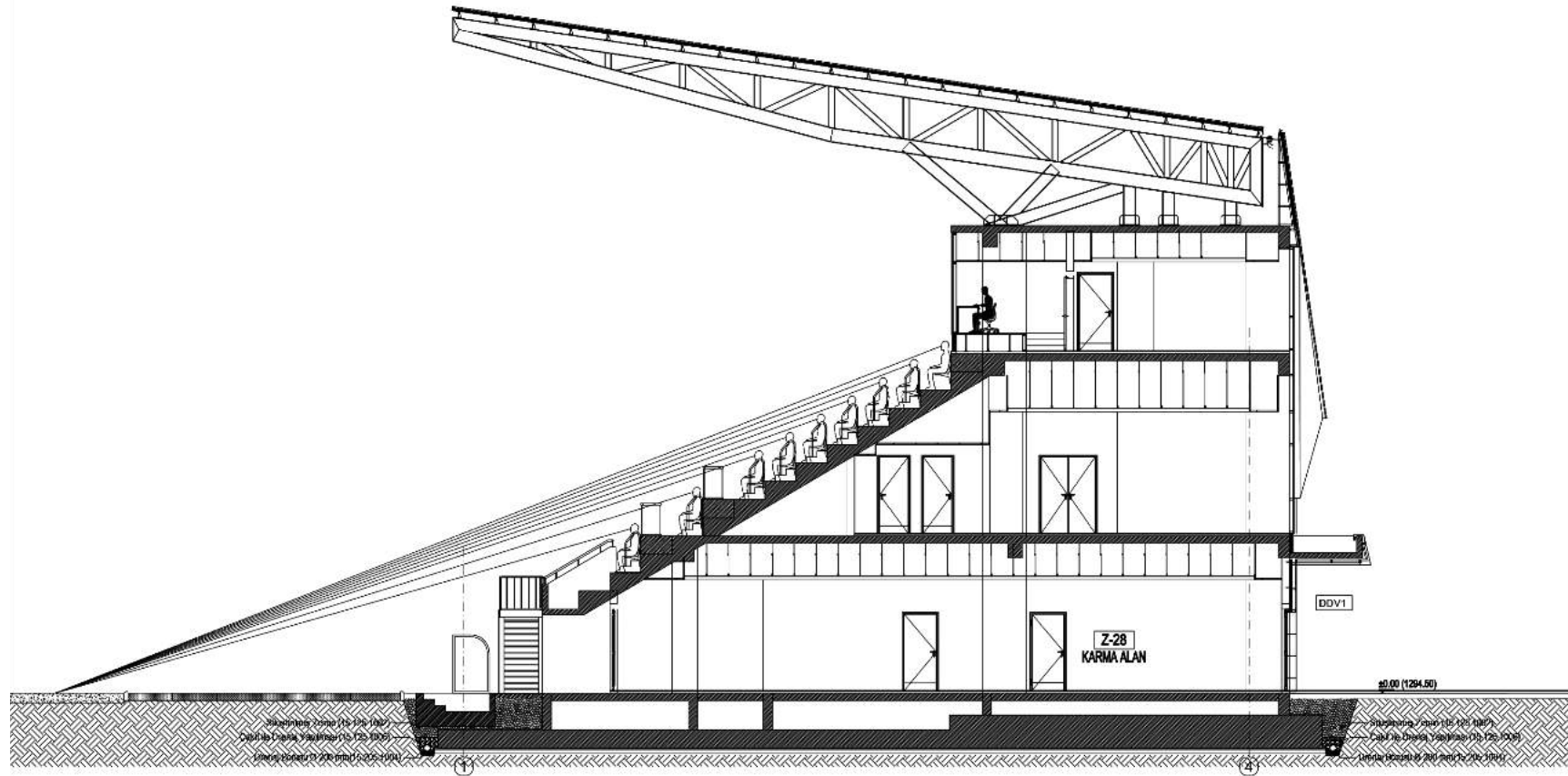


NUMBER/ SAYI	COLOUR/ RENK	SQUARE METERS/ METREKARE	VENUE NAME/ MAHAL ADI
1		55.00 m <sup>2</sup>	Reserve Bench Area Yedek Kulübesi Alanı
2		55.00 m <sup>2</sup>	Reserve Bench Area Yedek Kulübesi Alanı
3		12.00 m <sup>2</sup>	Technical Volume Teknik Hacim
4		12.00 m <sup>2</sup>	Technical Volume Teknik Hacim
5		12.00 m <sup>2</sup>	Technical Volume Teknik Hacim
6		12.00 m <sup>2</sup>	Technical Volume Teknik Hacim
7		12.00 m <sup>2</sup>	Technical Volume Teknik Hacim
8		12.00 m <sup>2</sup>	Technical Volume Teknik Hacim
9		12.00 m <sup>2</sup>	Technical Volume Teknik Hacim
10		12.00 m <sup>2</sup>	Technical Volume Teknik Hacim
11		12.00 m <sup>2</sup>	Technical Volume Teknik Hacim
12		12.00 m <sup>2</sup>	Technical Volume Teknik Hacim
13		12.00 m <sup>2</sup>	Technical Volume Teknik Hacim
14		12.00 m <sup>2</sup>	Technical Volume Teknik Hacim
15		12.00 m <sup>2</sup>	Technical Volume Teknik Hacim
16		12.00 m <sup>2</sup>	Technical Volume Teknik Hacim
17		30.00 m <sup>2</sup>	Changing rooms-Showers Soyunma Odası-Duşlar
18		30.00 m <sup>2</sup>	Audience Entry Seyirci Girişi
19		111.00 m <sup>2</sup>	Team Dressing Room Takım Soyunma Odası
20		22.00 m <sup>2</sup>	Technical Director's Room Teknik Direktör Odası
21		32.00 m <sup>2</sup>	Technical Meeting Room Teknik Toplantı Odası
22		20.00 m <sup>2</sup>	Match Delegate Room Maç Delege Odası
23		30.00 m <sup>2</sup>	Referee's Room Hakem Odası
24		19.00 m <sup>2</sup>	Accreditation's Room Akreditasyon Odası
25		19.00 m <sup>2</sup>	Mosque Mescit
26		18.00 m <sup>2</sup>	Stadium management Stad Yönetim
27		29.00 m <sup>2</sup>	Stadium management Stad Yönetim
28		17.00 m <sup>2</sup>	Studio Room Stüdyo Odası
29		17.00 m <sup>2</sup>	Studio Room Stüdyo Odası
30		19.00 m <sup>2</sup>	Store Depo
31		55.00 m <sup>2</sup>	Mixed Area Room Karışık Alan Odası
32		55.00 m <sup>2</sup>	Press Conference Room Basın Toplantı Odası
33		19.00 m <sup>2</sup>	Doping Room Doping Odası
34		18.00 m <sup>2</sup>	Blood Test Room Kan Testi Odası
35		17.00 m <sup>2</sup>	Urine Test Room İdrar Testi Odası
36		19.00 m <sup>2</sup>	Accreditation's Room Akreditasyon Odası
37		19.00 m <sup>2</sup>	Mosque Mescit
38		20.00 m <sup>2</sup>	Match Delegate Room Maç Delege Odası
39		30.00 m <sup>2</sup>	Referee's Room Hakem Odası
40		22.00 m <sup>2</sup>	Technical Director's Room Teknik Direktör Odası
41		32.00 m <sup>2</sup>	Technical Meeting Room Teknik Toplantı Odası
42		111.00 m <sup>2</sup>	Team Dressing Room Takım Soyunma Odası
43		30.00 m <sup>2</sup>	Changing rooms-Showers Soyunma Odası-Duşlar
44		30.00 m <sup>2</sup>	Audience Entry Seyirci Girişi

# TRIBUNES ARCHITECTURAL PLAN





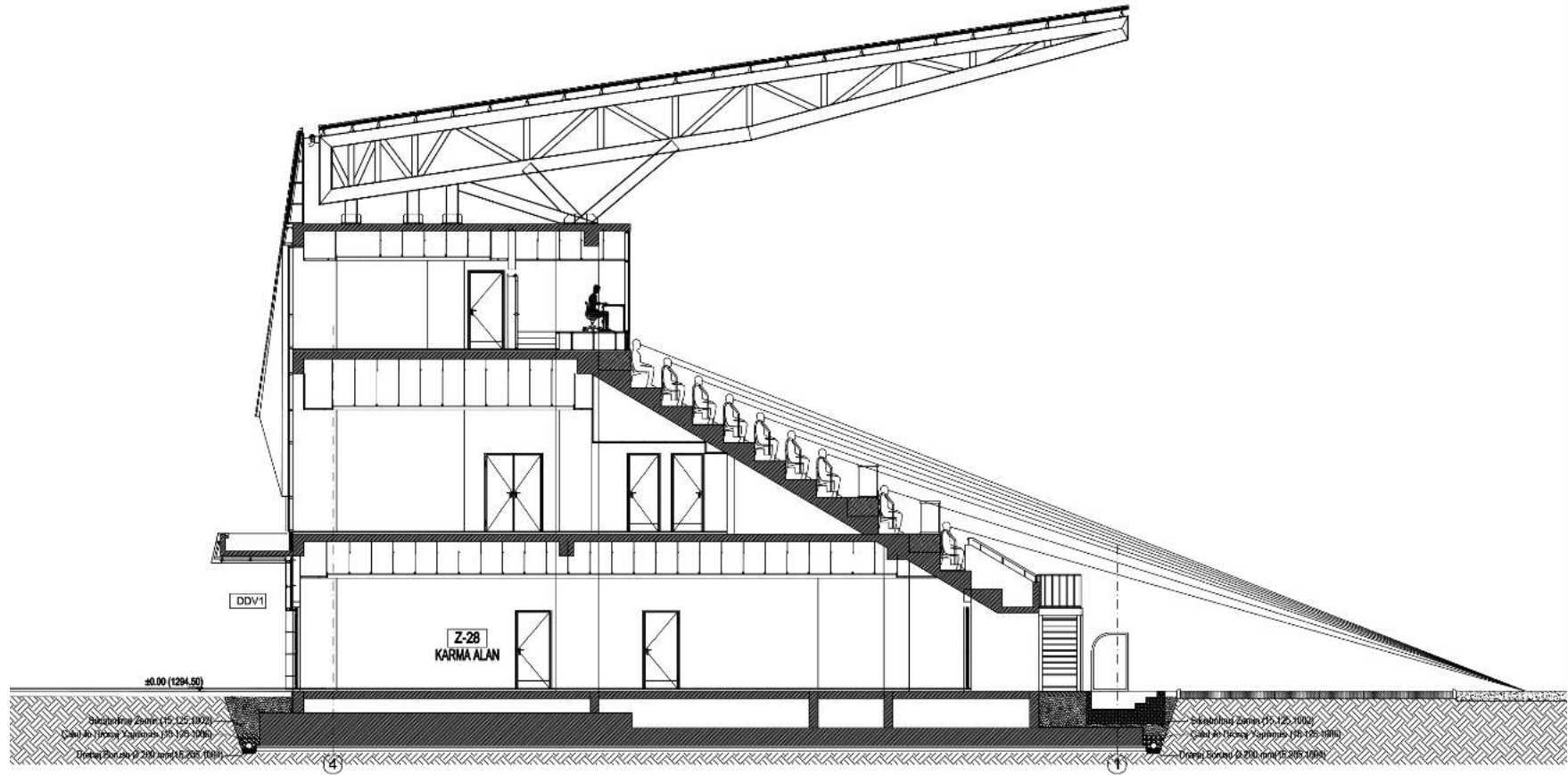


# TRIBUNES

## ARCHITECTURAL PLAN







# TRIBUNES

## ARCHITECTURAL PLAN







reform<sup>®</sup>  
sports



[www.reformsports.com](http://www.reformsports.com)